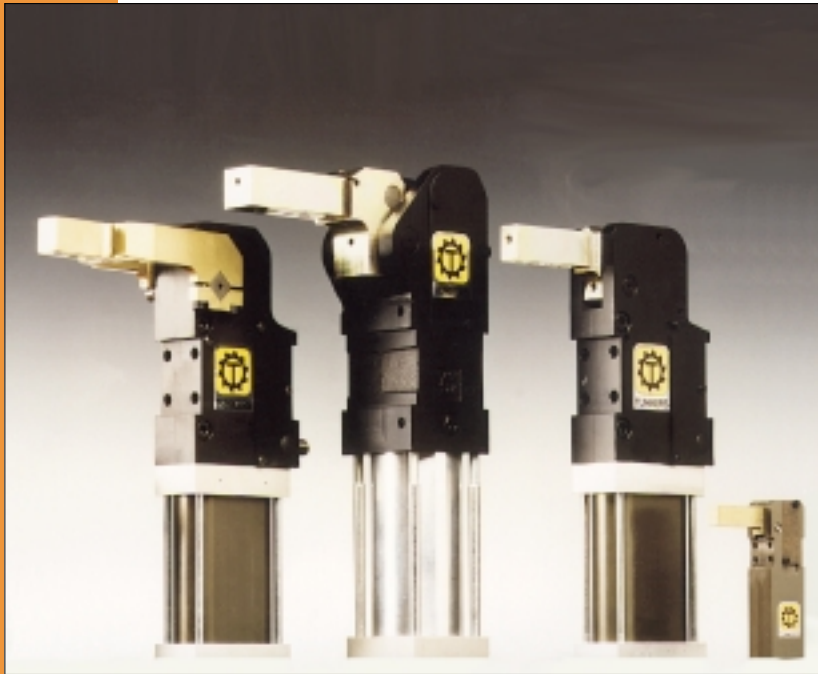


# **BRAUER**



**TUNKERS**

## **POWER CLAMPING**

- Specified as product of choice by many of the world's leading automotive companies
- Perfect for clamping, holding and positioning for sheet fabrication
- Product offers scope for significant improvements in assembly productivity
- Compact design, long service life, integrated position control systems
- Turnkey design service available

# **BRAUER**



**TUNKERS**



ISO 9002  
Certificate No: FM13674

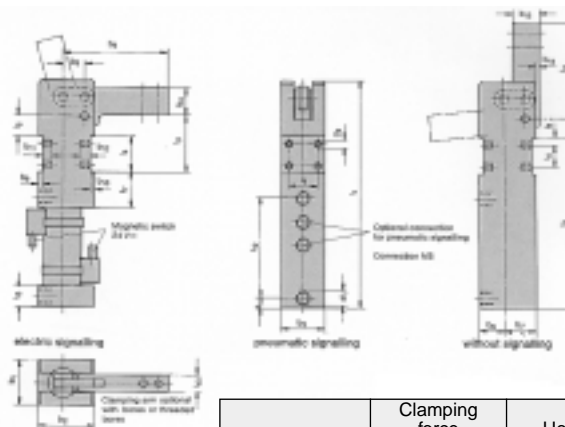
## MINICLAMPS

MODELS - PKS12 PKS16  
PKS20 PKS25



### Miniclamps (with self holding)

- Miniclamps are also available with aperture angles of 45°, 60°, 75° and 90°.
- Operation with dry air is permissible.
- Used in tight spaces where access is confined.



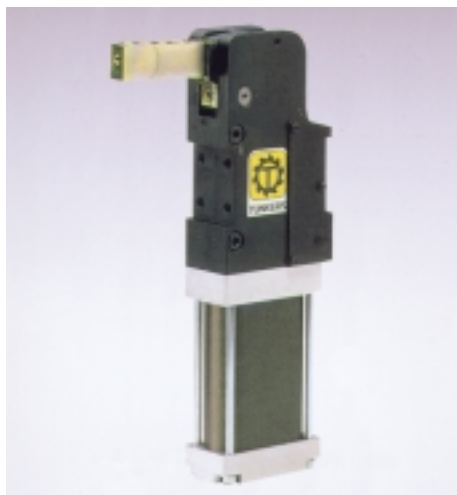
Type	Clamping force (5 bar)	Holding force	weight [kg]
PKS 12	10 kp	40kp	0.25
PKS 16	16 kp	50kp	0.30
PKS 20	25 kp	90kp	0.50
PKS 25	33 kp	100kp	0.80

Type	$l_1$	$l_2$	$l_3$	$l_4$	$l_5$	$l_6$	$l_7$	$l_8$	$l_9$	$l_{10}$	$l_{11}$	$l_{12}$	$l_{13}$	$l_{14}$	$b_1$
PKS 12	118	92	26.5	20	8	10	14	5	15	10	50	53	16	11	25
PKS 16	123	96	27.5	20	7.5	10	14	5	16	10	50	57	16	12	26
PKS 20	157.5	119.5	40	25	14	15	20	5	20	12	60	69	22	15	30
PKS 25	181.5	135.5	47	28	17	18	20	5	25	16	75	80	23.5	17.5	35

Type	$b_2$	$b_3$	$b_4$	$b_5$	$b_6$	$b_7$	$b_8$	$b_9$	$b_{10}$	$b_{11}$	$b_{12}$	$b_{13}$	$b_{14}$	$d_1$	$d_2$
PKS 12	277	25	15	60	12	15	10	2	3	5	6	11	2	M5	M5
PKS 16	32	26	15	62	14	18	12	2.5	2.5	5	7	12	2	M5	M5
PKS 20	39	30	18	75	17	22	15	3	3	6	8	16	3	G½	M5
PKS 25	45	35	22	93	20	25	18	4	4	6	8	18	4	G½	M5

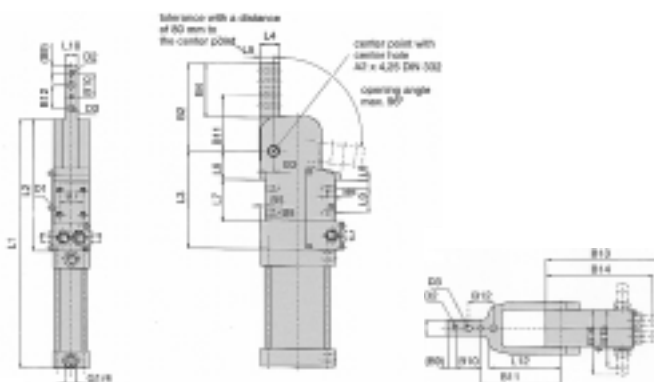
## FKSM SLIMLINE FLAT CLAMP

MODELS - FKSM40 FKSM50  
FKSM63 FKSM80



### Small design, with self holding

- Also available with opening angles 45°, 60°, 75°, 90°, 105°, 120°.
- With inductive detection system (T6).
- For tight space use where clearance is problematic.
- Self Holding.
- Long service life to millions of cycles.



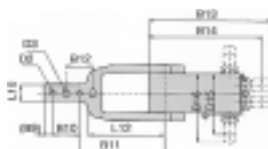
Type	Holding moment max	Clamping moment at 5 bar	piston $\varnothing$	weight [kg]
FKSM 40	350 Nm	80 Nm	40	2.8
FKSM 50	800 Nm	160 Nm	50	3.9
FKSM 63	1500 Nm	380 Nm	63	6.1
FKSM 80	2000 Nm	600 Nm	80	9.6

Type	B1 max	B2	B3 $\pm 0.1$	B4	B5	B6	B7 $\pm 0.1$	B8	B9	B10 $\pm 0.02$	B11 $\pm 0.1$	B12 $\pm 0.2$	B13 max.	B14 max.	B15 max.
FKSM 40	46	81	10	45	4.5	10	25	83.5	6	20	55	20	148	135	86
FKSM 50	56	100	10	75	6.5	11	30	88	10	30	60	30	155	145	93
FKSM 63	61	123	13	75	7.5	11	35	93	10	30	83	30	163	153	101
FKSM 80	67	160	21	75	9	15	40	120	10	30	120	30	195	185	110

Type	B16 max	D1	D2 H7	D3	L1 max.	L2 max.	L3 max.	L4 $\pm 0.1$	L5 $\pm 0.2$	L6 $\pm 0.05$	L7 $\pm 0.1$	L8 $\pm 0.1$	L9 $\pm 0.1$	L10 $-0.1$	L11
FKSM 40	96	M6	6	7	275	151	112.5	19	13.5	22.5	45	7.5	30	12	16
FKSM 50	103	M8	6	9	322	171	126.5	25	13	36.5	55	11	32	16	20
FKSM 63	111	M8	6	9	379	218	156.5	28	15	44.5	76	16	35	20	25
FKSM 80	120	M10	6	9	428	228	165	35	17	50	80	20	40	25	30

## TOTALLY ENCLOSED FKSM-K SERIES COMPACT CLAMPS

MODELS - FKSM K50/K63/K80



Type	Holding moment max	Clamping moment at 5 bar	piston Ø	weight [kg]
<b>FKSM 50K</b>	800 Nm	160 Nm	50	4.7
<b>FKSM 63K</b>	1500 Nm	380 Nm	63	6.8
<b>FKSM 80K</b>	2000 Nm	600 Nm	80	10.8

### Flat construction, with self holding

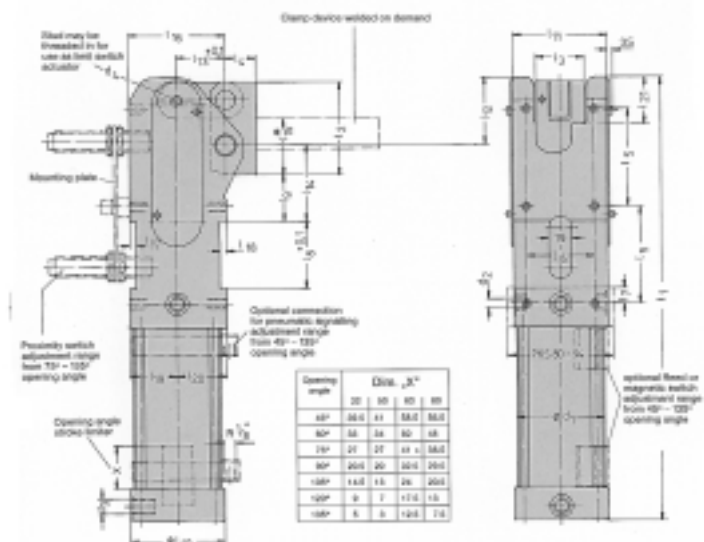
- Also available with opening angles of 45°, 60°, 75°, 90°, 105° and 120°.
- With inductive detection system (T6).
- Operation admitted with oilfree air.
- Slimline design.
- Handle applied clamping also available.

Type	B1	B2	B3 ±0.1	B4	B5	B6	B7 ±0.1	B8	B9	B10 ±0.02	B11 +0.1	B12 ±0.2	B13 max.	B14 max.	B15 max.	B16 max.
<b>FKSM 50K</b>	45	135	10	65	6.5	11	30	88	10	30	95	30	155	145	90	100
<b>FKSM 63K</b>	52	145	13	65	7.5	11	35	93	10	30	105	30	163	153	97	107
<b>FKSM 80K</b>	62	160	21	65	9	15	40	120	10	30	120	30	195	185	110	120

Type	D1	D2 H7	D3	L1	L2	L3	L4 ±0.1	L5 ±0.2	L6 ±0.05	L7 +0.1	L8 ±0.1	L9 ±0.1	L10	L11	L12	L13
<b>FKSM 50K</b>	M8	6	9	326	173	126.5	25	13	36.5	55	11	32	20	65	85	22
<b>FKSM 63K</b>	M8	6	9	366	205	152.5	28	15	44.5	76	16	35	25	78	95	26
<b>FKSM 80K</b>	M10	6	9	428	228	165	35	17	50	80	20	40	30	94	110	32

## PNEUMATIC CLAMP STANDARD DESIGN

MODELS - PKS32 PKS50  
PKS63 PKS80



### Self holding clamp

- Proven reliable technology.
- Optional clamping arm configuration.
- Heavy duty sturdy design for mass production.
- Handle applied clamping is also available.
- Positional switching is also available.

Type	M <sub>t</sub> (5 bar)	I <sub>1</sub>	I <sub>2</sub>	I <sub>3</sub>	I <sub>4</sub>	I <sub>5</sub>	I <sub>6</sub>	I <sub>7</sub>	I <sub>8</sub>	I <sub>9</sub>	I <sub>10</sub>	I <sub>11</sub>	I <sub>12</sub>	I <sub>13</sub>
<b>PKS 32</b>	50 Nm	255	55	25	17	55	36	7.5	40	23	50	48	40	28
<b>PKS 50</b>	150 Nm	309	67	35	25	60	49	7.5	45	30.5	65	65	50	32.5
<b>PKS 63</b>	320 Nm	366.5	78	40	25	80	55	12.5	55	35.5	76	76	57	40
<b>PKS 80</b>	320 Nm	379	79	40	25	80	55	12.5	55	35.5	94	76	58	40

Type	I <sub>14</sub>	I <sub>15</sub>	I <sub>16</sub>	I <sub>17</sub>	I <sub>18</sub>	I <sub>19</sub>	I <sub>20</sub>	I <sub>21</sub>	d <sub>1</sub>	d <sub>2</sub>	d <sub>3</sub>	d <sub>4</sub>	Wt. kg
<b>PKS 32</b>	42	46	53	3	6	25	28	30	40	M6	R <sup>1</sup> / <sub>4</sub> "	M4x8	2.4
<b>PKS 50</b>	55.5	50	65	5	5	32.5	32.5	49	58	M8	R <sup>1</sup> / <sub>4</sub> "	M5x10	4.9
<b>PKS 63</b>	62.5	57	78	5.5	5.5	38	40	40	70	M8	R <sup>1</sup> / <sub>4</sub> "	M8x10	7.8
<b>PKS 80</b>	62.5	57	78	5.5	15	47	52	35	90	M10	R <sup>1</sup> / <sub>4</sub> "	M8x10	10.3

# OTHER **BRAUER** PRODUCTS

INDUSTRIAL PRESSES



TOGGLE CLAMPS



HEAVY DUTY CLAMPS



VA 300 SERIES



PNEUMATIC SWING CLAMPS



LOCKING CLAMPS



HMC WHEELS & CASTORS



KIPP MACHINE ACCESSORIES



EXACTA DIE SETS



FOR FURTHER DETAILS CONTACT

**BRAUER**<sup>®</sup>

TEL: 01908 - 374022 FAX: 01908 - 641628  
e-mail: sales@brauer.co.uk