

BRAUER
AIR PRODUCTS

BRAUER

BRAUER
AIR PRODUCTS

BRAUER
AIR PRODUCTS

BRAUER
AIR PRODUCTS

BRAUER
AIR PRODUCTS

BRAUER
AIR PRODUCTS



BRAUER
AIR PRODUCTS

BRAUER
AIR PRODUCTS

BRAUER
AIR PRODUCTS

BRAUER
AIR PRODUCTS

AIRMOVERS (AIR AMPLIFIERS)



ISO 9002
Certificate No: FM13674

Since 1926, Brauer has been providing industry with the finest engineered products, expert technical support, on time deliveries and unparalleled customer service. Our brands are now recognised world-wide as products of the highest quality, and the breadth of our product portfolio provides our demanding customers with a tooling solution for a wide variety of problems.

Brauer continues to be committed to bringing new innovative tooling products to the market place, and to updating and improving existing product ranges wherever possible. This new Brauer Airmover (air amplifier) catalogue updates our long standing, and successful range of airmovers which have led the market for over 30 years. In addition, this catalogue introduces a large number of innovative additions to our airmover range, all designed and manufactured to the very highest standards.

Our team of highly talented engineers is backed by the latest computer aided design facilities including three dimensional feature based parametric solid modelling. Manufacturing is carried out in our modern, well equipped factory accredited with ISO 9002 certification and situated in Milton Keynes, some 40 miles north of London.

At Brauer, we continue to be motivated by working with our customers in providing innovative solutions for their particular tooling requirements. These working partnerships, built by many years of unparalleled customer service, will ensure that Brauer branded tooling, and airmovers in particular, will remain at the forefront of their markets.

To view the complete tooling portfolio manufactured by the Brauer companies, please consult our Web Site at www.Brauer.co.uk.

SPECIAL PRODUCTS TO SUIT YOUR PARTICULAR NEEDS



If, after considering our standard range of product, you are unable to find a solution to suit your particular application, then please consult our sales and design engineers who will be only too pleased to consider the design and manufacture of a **bespoke** specially designed item to meet your particular needs.

For further details of any Brauer Product contact

BRAUER

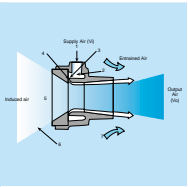
**HMC BRAUER LIMITED
DAWSON ROAD, MOUNT FARM, MILTON KEYNES, ENGLAND MK1 1JP**

**TEL: 00 44(0)1908-374022 FAX: 00 44(0)1908-641628
email: sales@brauer.co.uk Web: www.brauer.co.uk**

© HMC Brauer Ltd 1999

No part of this publication may be reproduced in any form (including photocopying or storing in any medium by electronic means) without the written permission of HMC Brauer Ltd.

HMC-Brauer Limited reserve the right to change the design or specification of the products shown in this catalogue without prior notification.



AIR MOVERS EXPLAINED

2 - 3



AIR MOVERS - **Fixed**

4 - 7

- **Adjustable**

8 - 11

- **Stainless**

12 - 15

- **Acetal**

16 - 19



STRIP AIRMOVERS

20 - 23



TRIGGER ACTION BLOW GUNS

24 - 26



REVERSIBLE AIR GUNS

27 - 28



AIRMISER NOZZLES

29 - 30



EASY CLEAN DRUM PUMP

31 - 32



VORTEX TUBES

33 - 34



COLD AIR GUNS

35 - 36



EXTRACTOR VENTILATORS

37 - 41

A

I

R

M

O

V

E

R

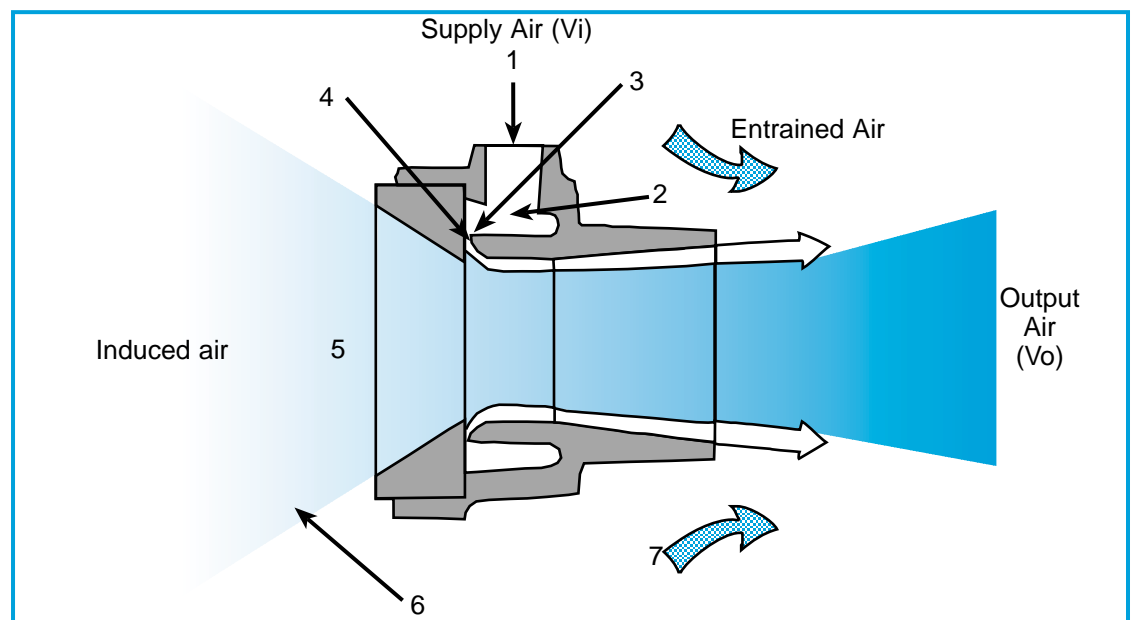
S

If you are looking to convey light materials, extract fumes, smoke or air, or simply cool down a hot area of a product quickly then airmovers provide a simple, cost effective means of achieving your aim. Using the energy from a small volume of compressed air (supplied from a standard compressor) an airmover amplifies surrounding air to high volume, low pressure output airflow using the coanda effect.

Airmovers are extremely quiet and efficient and can amplify compressed air input up to 100 times allowing increased airflow while substantially reducing compressed air consumption.

How Airmovers Work

An airmover is an air flow amplifier — it uses the energy from a small volume of compressed air (from the normal shop supply) to produce a high velocity, high volume, low pressure output airflow.



V_i = Volume of supply air (free air at atmospheric pressure)

V_o = Volume output, **ducted**
= V_i + Induced air

V_o = Volume output, **unducted**
= V_i + Induced air + Entrained air

Compressed air flows from the supply inlet (1) into an annular chamber (2).

The supply air is throttled by an annular gap (3) and the resultant thin layer of high velocity air adheres to the profile (4) which turns the flow through 90° to pass down the bore.

The action of the high velocity supply air flowing over the profile causes a pressure drop which induces large volumes of ambient air (5).

This induced flow is augmented, and gains velocity, by contact with the supply air flow through the bore of the unit.

When an Airmover is used without output ducting, the high volume flow of supply and induced air from the bore entrains further ambient air.

The final ratio of supply (free) air volume to output volume (induced + supply + entrained air) can exceed 100:1.

Airmovers have the following *features* and *characteristics*:-

- ★ They have no moving parts and are very safe
- ★ When used with an effective filter they require no maintenance
- ★ They are quiet in operation
- ★ They have unobstructed bores
- ★ Their output is variable by regulation of the supply air
- ★ They can be instantly stopped or started
- ★ No combustion hazard
- ★ No electrical interference
- ★ Both the inlet and outlet stages can be ducted, allowing fresh air to be drawn in, for the removal of fumes or conveying of small particles

ADVANTAGES OVER FANS

- ★ More compact, simple, lightweight and portable
- ★ Driven by air, not electricity
- ★ No moving parts – hence safer and maintenance free
- ★ Each end can be ducted

SOME SIMPLE AIRMOVER APPLICATIONS

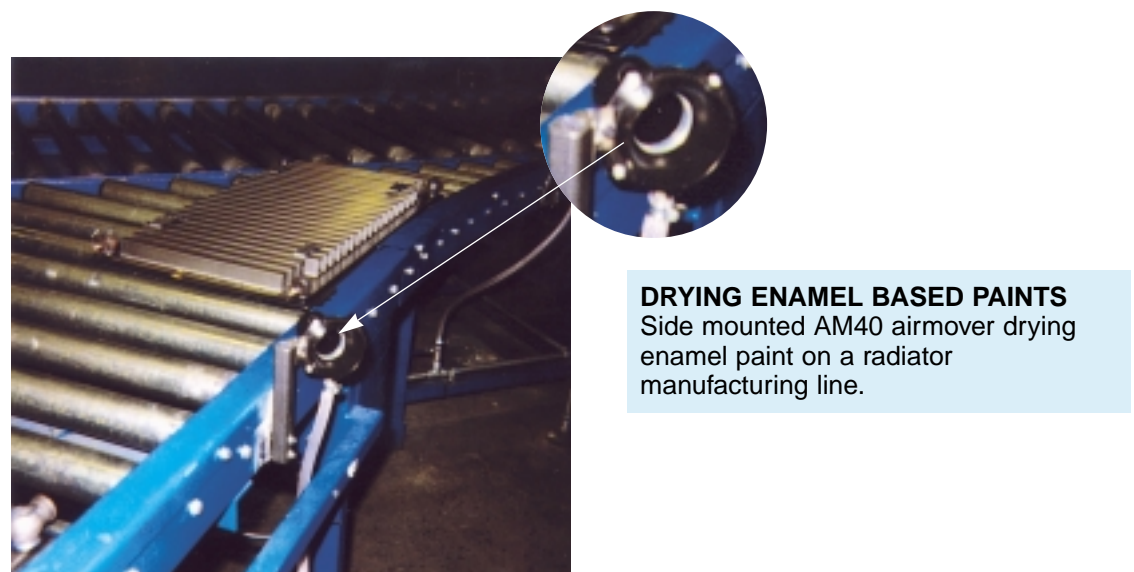
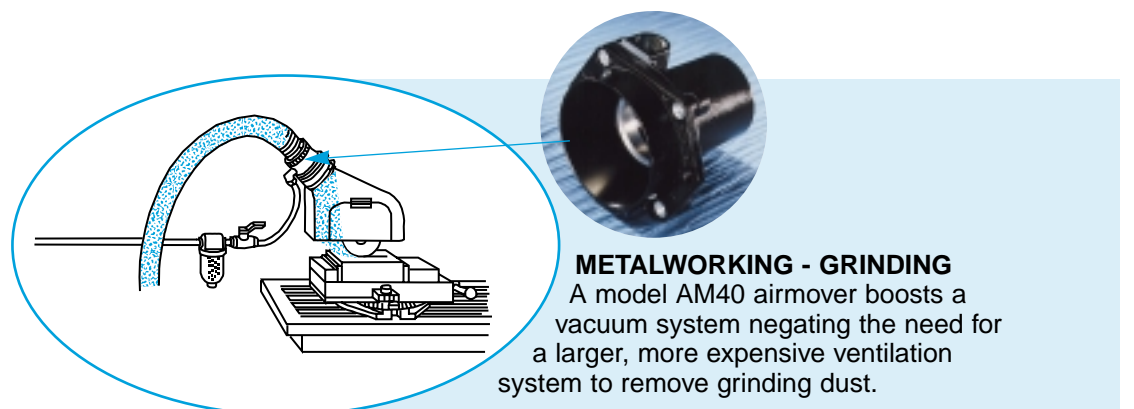
- ★ Drying wet surfaces
- ★ Drying water based combustible paints
- ★ Blowing off and cleaning mechanical parts
- ★ Cooling heat in moulds and ovens
- ★ Extracting smoke and fumes e.g. in welding
- ★ Venting fumes in tanks e.g. in ship cargo holds

FOR FURTHER TECHNICAL DATA AND INFORMATION ON FLOW RATES
PLEASE CONTACT BRAUER TECHNICAL SALES DEPARTMENT.

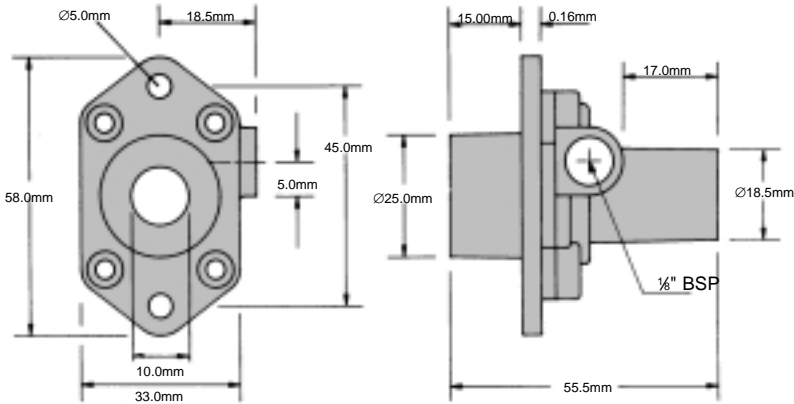
BRAUER has been the leading manufacturer of fixed gap airmovers for 30 years, and these products form the core of our airmover product range. Other manufacturers have copied these products – a compliment to our air mover engineering design and success.

Our range of inexpensive fixed gap airmovers should provide a solution for the great majority of possible applications. However, our design engineers continue to develop our range, and we are also prepared to consider, the design and manufacture of special products to meet the customers specific requirements.

SOME TYPICAL APPLICATIONS – AIRMOVERS/AIR AMPLIFIERS



FIXED GAP AIRMOVER MODEL - AM10



Material: Zinc alloy.

Weight: 0.100 Kg

Standard Gap: 0.05mm

DBA at: 5.5 bar is 72

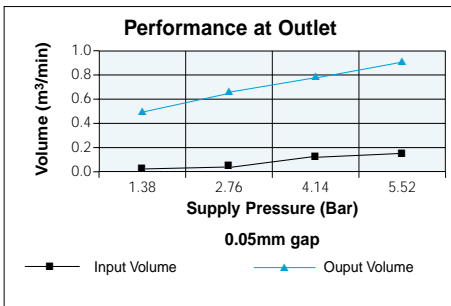
Shims: 0.04, 0.05, 0.08mm

Optional Extra

Standard Inlet Thread: 1/8" BSP

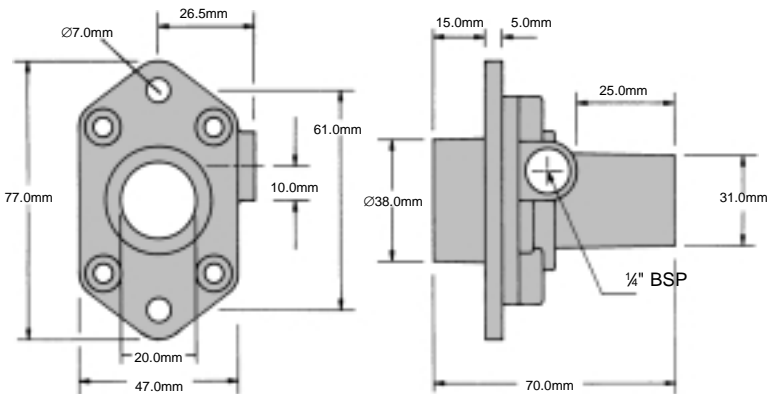
Options: 1/8" NPT

Please specify on order 1/8" NPTF



Bar	Vol in m³/min	Vol out m³/min
1.38	0.048	0.490
2.76	0.065	0.660
4.14	0.125	0.733
5.52	0.164	0.886

FIXED GAP AIRMOVER MODEL - AM20



Material: Zinc alloy.

Weight: 0.250 Kg

Standard Gap: 0.05mm

DBA at: 5.5 bar is 79

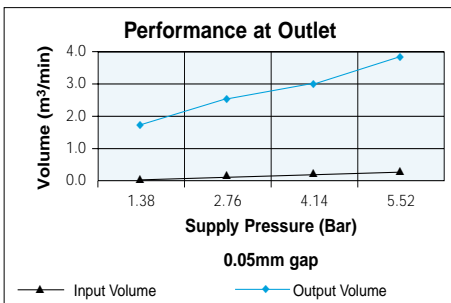
Shims: 0.04, 0.05, 0.08mm

Optional Extra

Standard Inlet Thread: 1/4" BSP

Options: 1/4" NPT

Please specify on order 1/4" NPTF



Bar	Vol in m³/min	Vol out m³/min
1.38	0.105	1.614
2.76	0.164	2.492
4.14	0.224	3.030
5.52	0.286	3.681

A
I
R

M

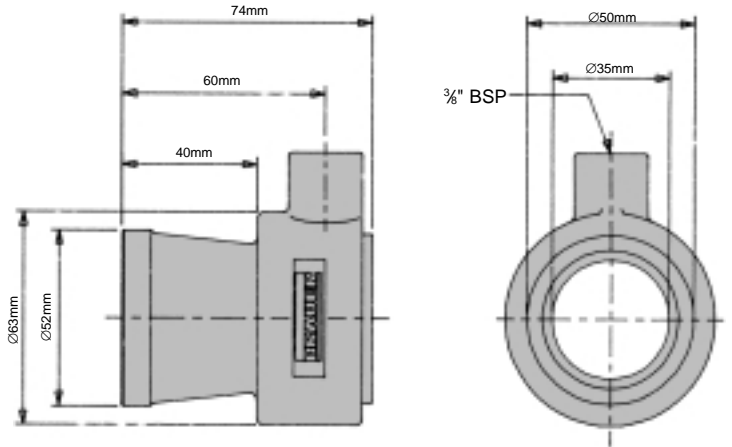
O

V

E

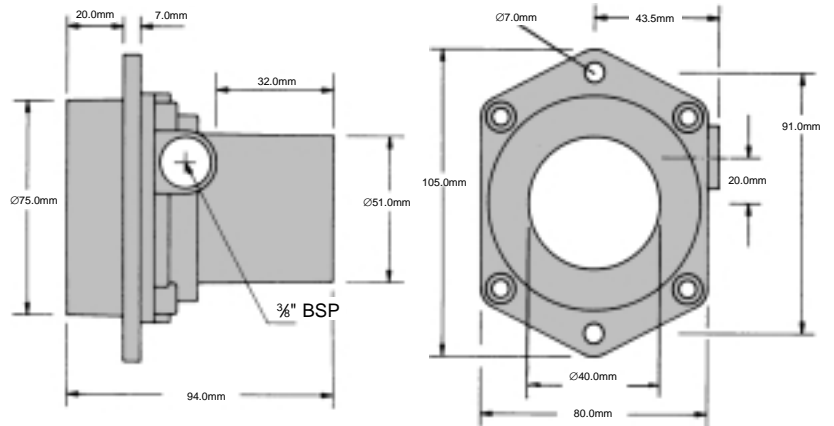
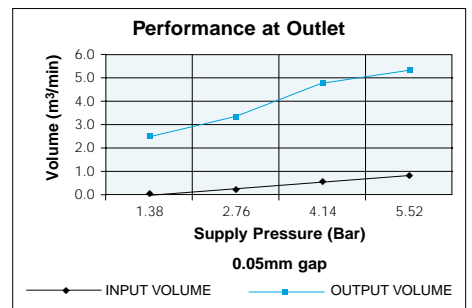
R

S



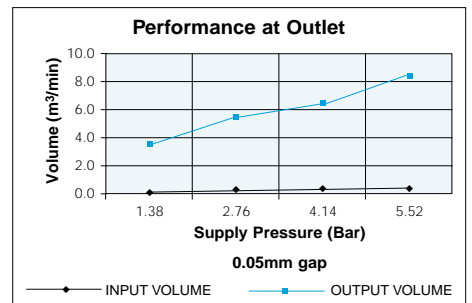
Material: Zinc alloy and aluminium.
Weight: 0.19Kg
Standard Gap: 0.05mm
DBA at: 5.5 bar is 80
Shims: Not required
Standard Inlet Thread: #1/8" BSP
Options: #1/8" NPT
Please specify on order #1/8" NPTF

Bar	Vol in m ³ /min	Vol out m ³ /min
1.38	0.193	2.350
2.76	0.326	3.361
4.14	0.484	4.621
5.52	0.631	5.207



Material: Zinc alloy.
Weight: 0.900 Kg
Standard Gap: 0.05mm
DBA at: 5.5 bar is 80
Shims: 0.04, 0.05, 0.08mm
Optional extra
Standard Inlet Thread: #1/8" BSP
Options: #1/8" NPT
Please specify on order #1/8" NPTF

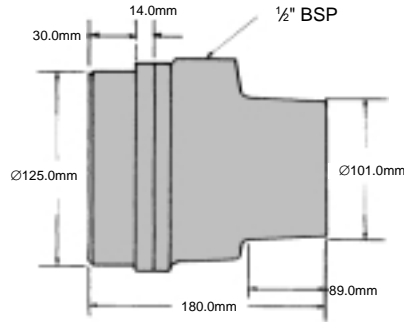
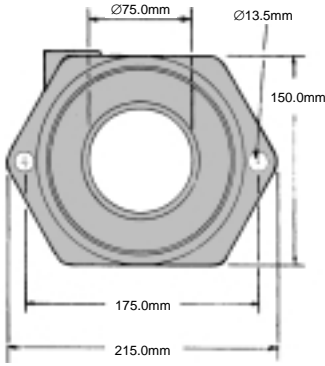
Bar	Vol in m ³ /min	Vol out m ³ /min
1.38	0.207	3.256
2.76	0.323	5.182
4.14	0.439	6.513
5.52	0.555	8.297



FIXED GAP AIRMOVER MODEL - AM75



A
I
R
M
O
V
E
R
S



Material: Zinc alloy.

Weight: 2.7Kg

Standard Gap: 0.05mm

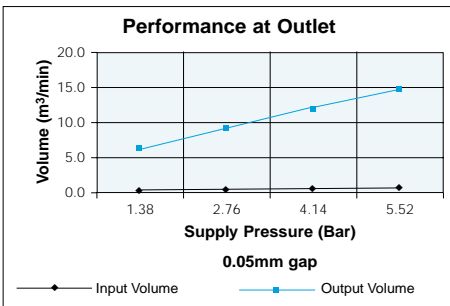
DBA at: 5.5 bar is 80

Shims: Not required

Standard Inlet Thread: 1/2" BSP

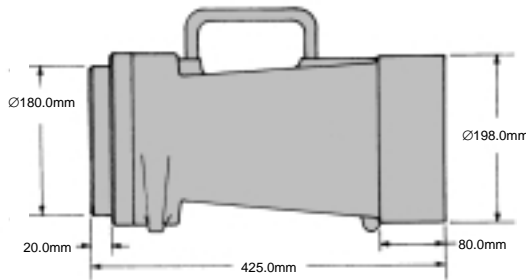
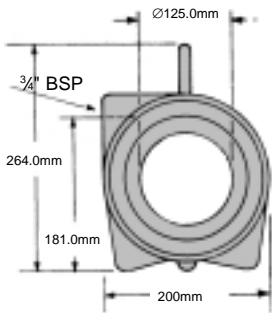
Options: 1/2" NPT

Please specify on order 1/2" NPTF



Bar	Vol in m³/min	Vol out m³/min
1.38	0.425	6.230
2.76	0.651	9.203
4.14	0.906	12.035
5.52	1.133	14.866

FIXED GAP AIRMOVER MODEL - AM125



Material: Aluminium alloy.

Weight: 7.55Kg

Standard Gap: 0.15mm

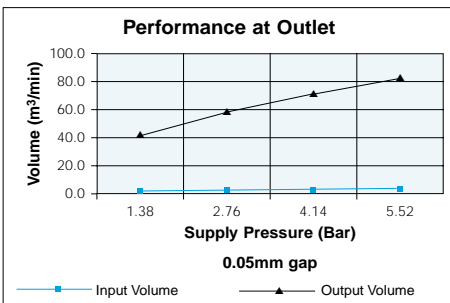
DBA at: 5.5 bar is 85

Shims: Not required

Standard Inlet Thread: 3/4" BSP

Options: 3/4" NPT

Please specify on order 3/4" NPTF



Bar	Vol in m³/min	Vol out m³/min
1.38	1.982	38.936
2.76	3.115	53.660
4.14	4.276	68.668
5.52	5.324	80.137

A

I

R

In some applications, the engineer must be able to vary the volume of outlet air. Brauer adjustable airmovers incorporate air gaps which are not fixed, instead the gap can be varied by loosening the knurled ring and adjusting the sleeve accordingly. The result is that air consumption can be minimised and output volumes varied from a light blow to a blast of high volume air. When the desired air flows are obtained, the knurled ring can be locked into position. In most instances, the ideal air gap will be between 0.05mm and 0.10mm (.002" to .004")

The Brauer standard range of adjustable airmovers are manufactured in our factory from aluminium. Stainless steel versions are also available when the application requires (see page 12)

Optional mounting rings and magnetic base are available (see page 19).

M

O

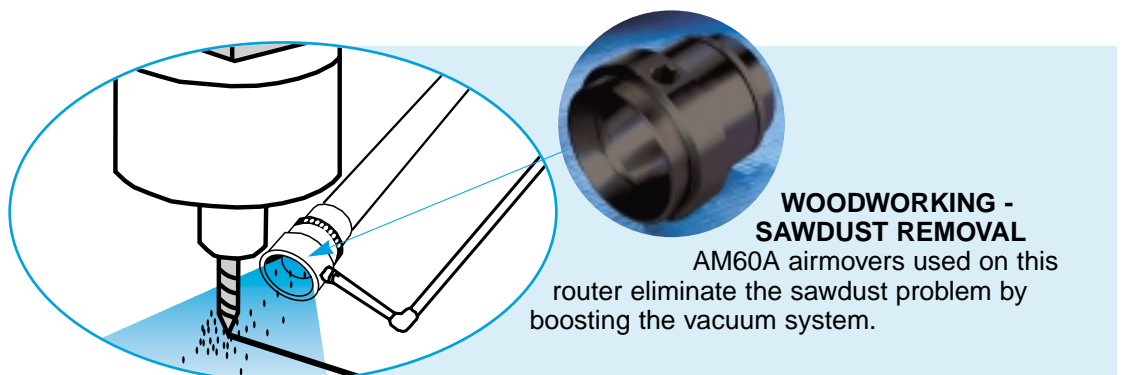
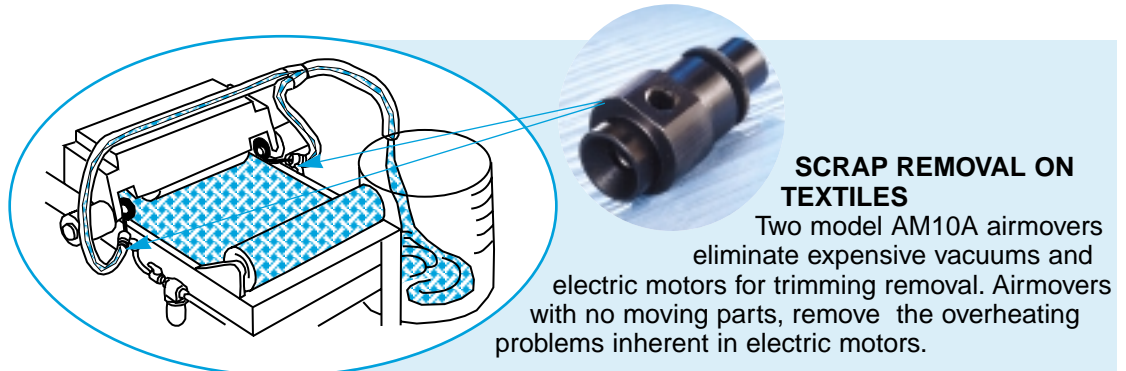
V

E

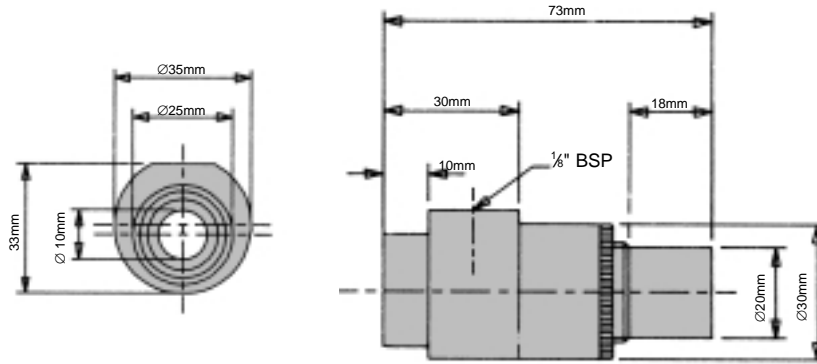
R

S

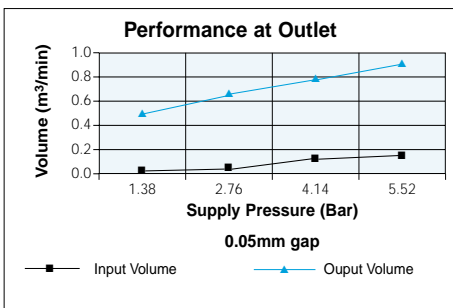
SOME TYPICAL APPLICATIONS – ADJUSTABLE AIRMOVERS



ADJUSTABLE AIRMOVER MODEL - AM10A

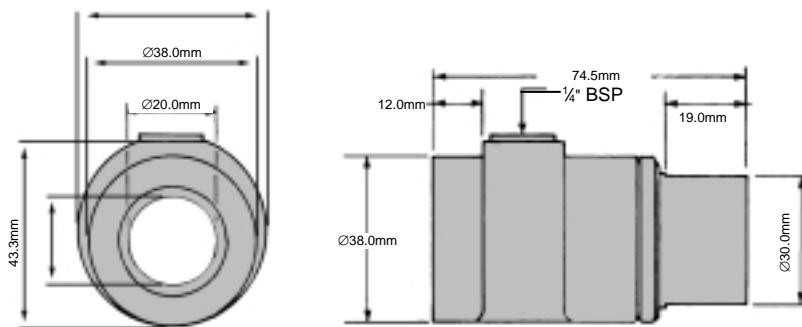


Material: Aluminium alloy.
Weight: 0.09Kg
Standard Gap: Adjustable
DBA at: 5.5 bar is 73
Shims: Not Applicable
Standard Inlet Thread: 1/8" BSP
Options: 1/8" NPT
 Please specify on order 1/8" NPTF

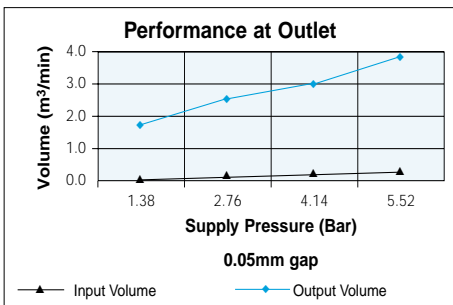


Bar	Vol in m³/min	Vol out m³/min
1.38	0.048	0.490
2.76	0.065	0.660
4.14	0.125	0.733
5.52	0.164	0.886

ADJUSTABLE AIRMOVER MODEL - AM20A



Material: Aluminium alloy.
Weight: 0.13Kg
Standard Gap: Adjustable
DBA at: 5.5 bar is 79
Shims: Not Applicable
Standard Inlet Thread: 1/4" BSP
Options: 1/4" NPT
 Please specify on order 1/4" NPTF



Press in bar	Vol in m³/min	Vol out m³/min
1.38	0.105	1.614
2.76	0.164	2.492
4.14	0.224	3.030
5.52	0.286	3.681

A
/
R

M

O

V

E

R

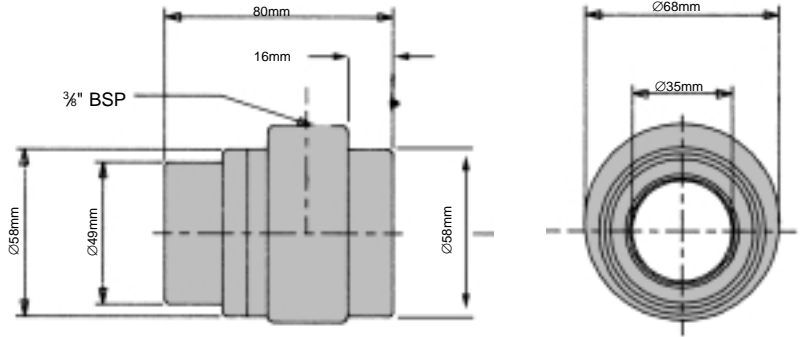
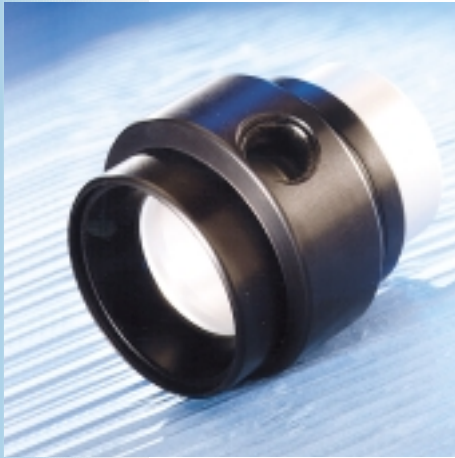
S

A
I
R

M

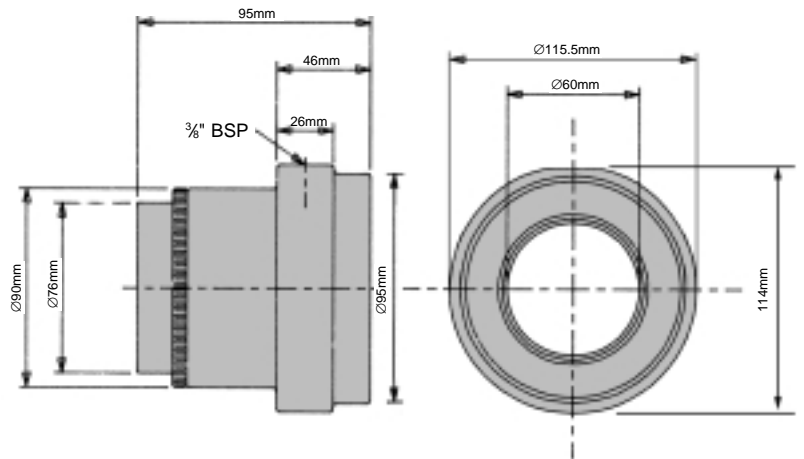
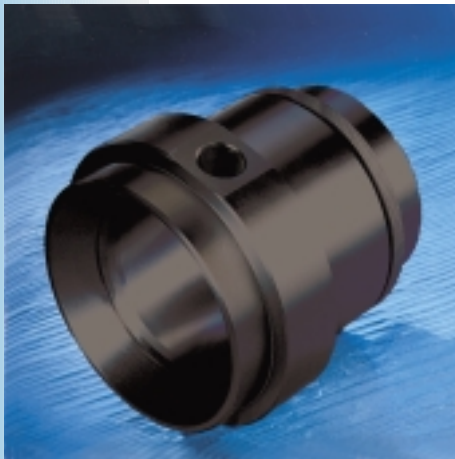
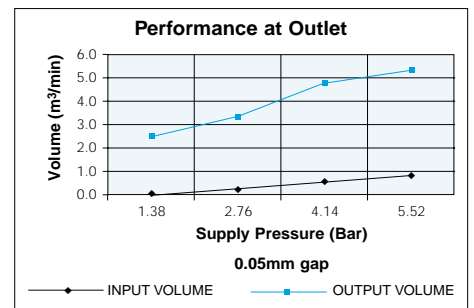
O
V
E

R
S



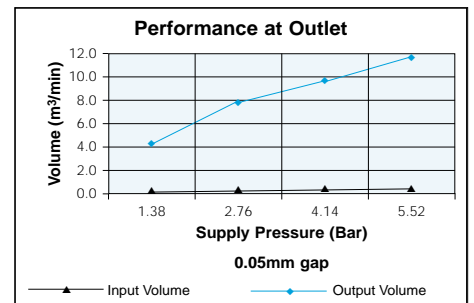
Material: Aluminium alloy.
Weight: 0.28Kg
Standard Gap: Adjustable
DBA at: 5.5 bar is 80
Shims: Not Applicable
Standard Inlet Thread: #1/8" BSP
Options: #1/8" NPT
Please specify on order #1/8" NPTF

Bar	Vol in m ³ /min	Vol out m ³ /min
1.38	0.193	2.350
2.76	0.326	3.361
4.14	0.484	4.621
5.52	0.631	5.207

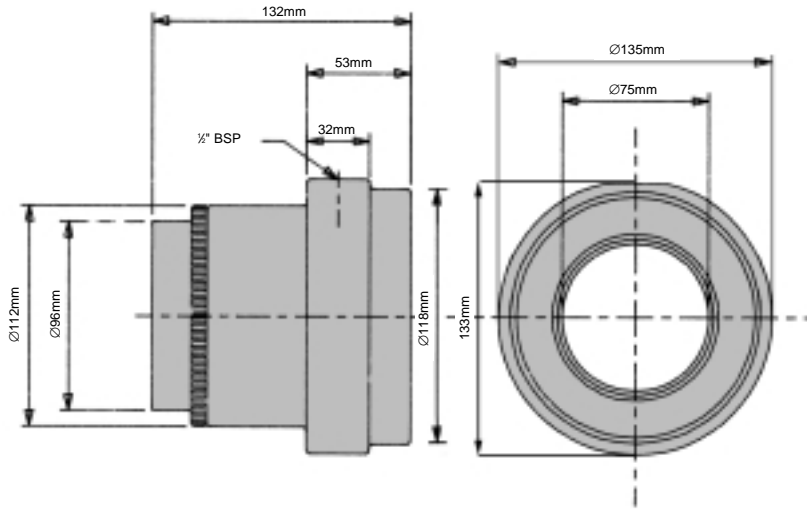


Material: Aluminium alloy.
Weight: 0.83Kg
Standard Gap: Adjustable
DBA at: 5.5 bar is 80
Shims: Not Applicable
Standard Inlet Thread: #1/8" BSP
Options: #1/8" NPT
Please specify on order #1/8" NPTF

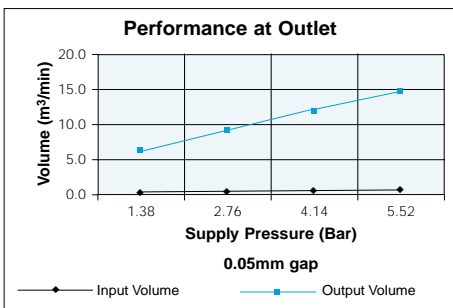
Bar	Vol in m ³ /min	Vol out m ³ /min
1.38	0.280	4.191
2.76	0.476	7.561
4.14	0.654	9.231
5.52	0.841	11.327



ADJUSTABLE AIRMOVER MODEL - AM75A

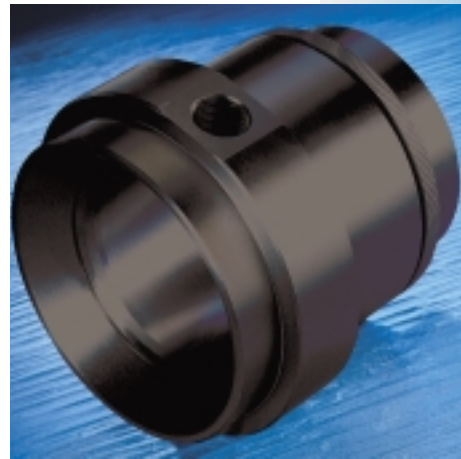
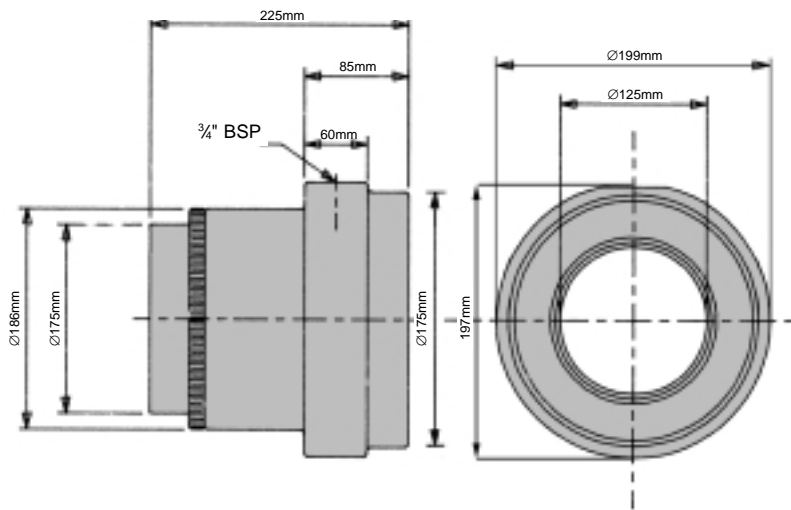


Material: Aluminium alloy.
Weight: 1.5Kg
Standard Gap: Adjustable
DBA at: 5.5 bar is 80
Shims: Not Applicable
Standard Inlet Thread: 1/2" BSP
Options: 1/2" NPT
Please specify on order 1/2" NPTF

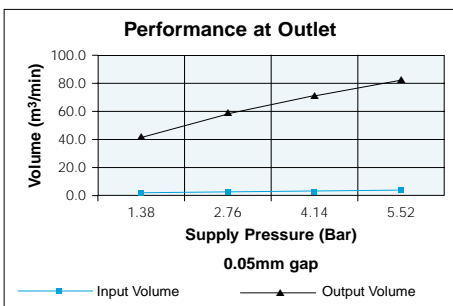


Bar	Vol in m³/min	Vol out m³/min
1.38	0.425	6.230
2.76	0.651	9.203
4.14	0.906	12.035
5.52	1.133	14.866

ADJUSTABLE AIRMOVER MODEL - AM125A



Material: Aluminium Alloy.
Weight: Kg
Standard Gap: Adjustable
DBA at: 5.5 bar is
Shims: Not applicable
Standard Inlet Thread: 3/4" BSP
Options: 3/4" NPT
Please specify on order 3/4" NPTF



Bar	Vol in m³/min	Vol out m³/min
1.38	1.982	38.936
2.76	3.115	53.660
4.14	4.276	68.668
5.52	5.324	80.137

A
I
R
M
O
V
E
R
S

A

I

R

M

O

V

E

R

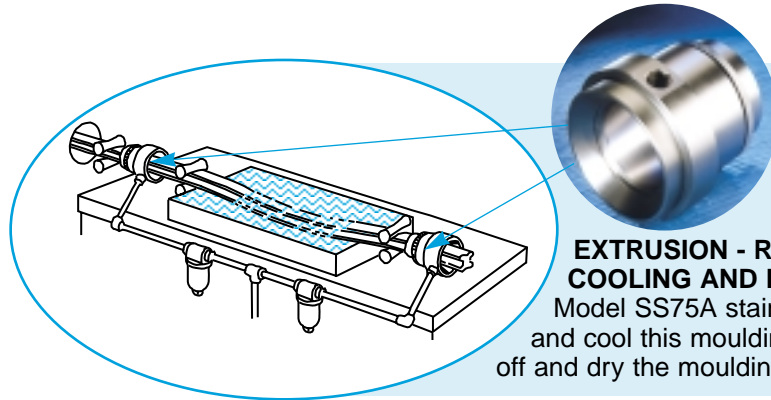
S

Airmover applications can exist even in the most hazardous of environments. Alternatively, the hygiene requirements of the food, pharmaceutical and other industries require product friendly tooling. In all of these extremes, stainless steel airmovers can offer a very viable solution. Our range is supplied to demanding customers worldwide and comes with an adjustable airgap.

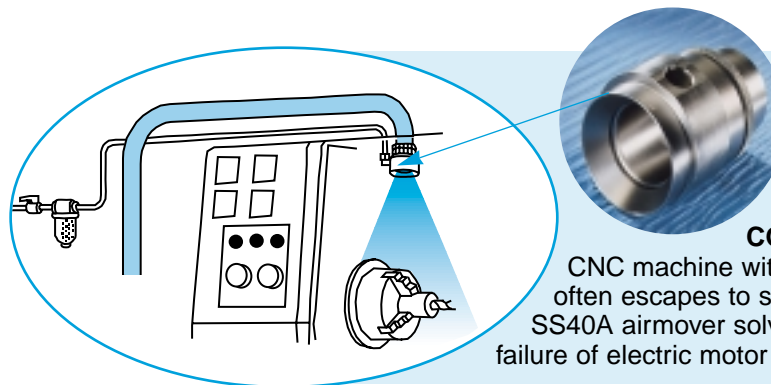
So should your air amplifier be required to resist corrosive environments or be food product friendly, then Brauer has a stainless steel adjustable airmover to meet your needs.

Note: We also manufacture adjustable airmovers in acetal and in certain applications these may be a suitable alternative to stainless steel (See page 16)

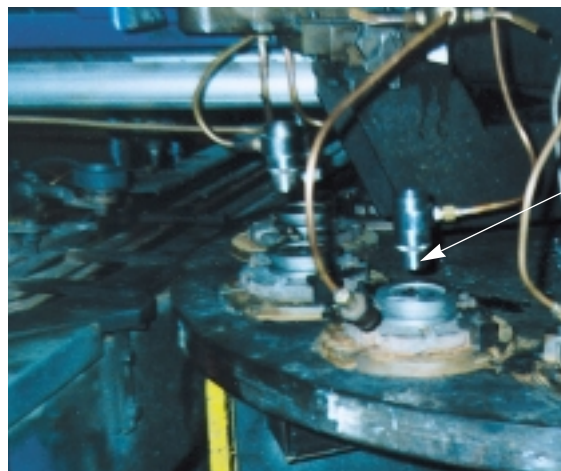
Optional mounting rings and magnetic base are available (see page 19).

SOME TYPICAL APPLICATIONS - STAINLESS STEEL ADJUSTABLE AIRMOVERS

EXTRUSION - RUBBER MOULDING COOLING AND DRYING

Model SS75A stainless airmovers help set-up and cool this moulding after extrusion. Then blow off and dry the moulding prior to forming.

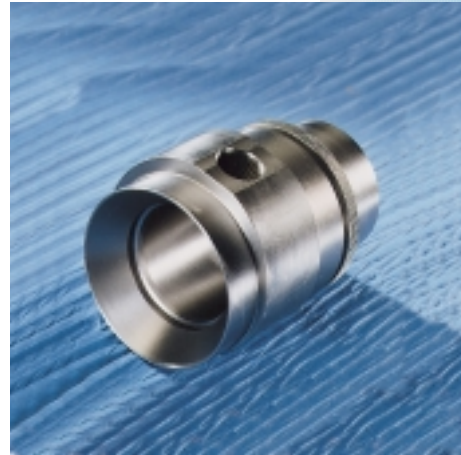
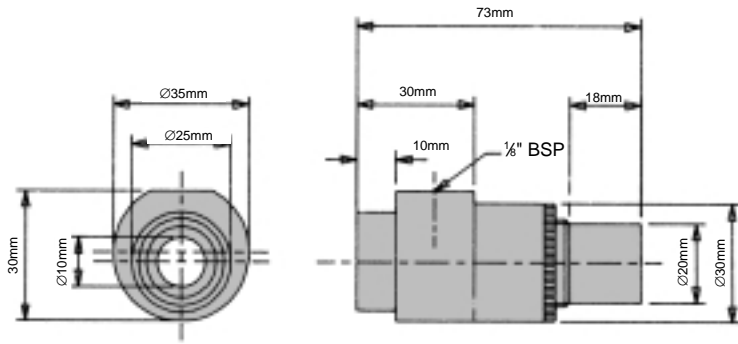

METALWORKING - COOLANT MIST REMOVAL

CNC machine with doors closed, oily mist often escapes to surrounding areas. The SS40A airmover solves the problem, without failure of electric motor or vacuum.

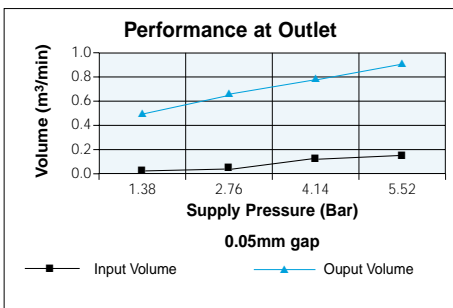

LENS MANUFACTURE

SS20A's used to cool optical lenses during manufacture.

STAINLESS STEEL ADJUSTABLE AIRMOVER MODEL - SS10A

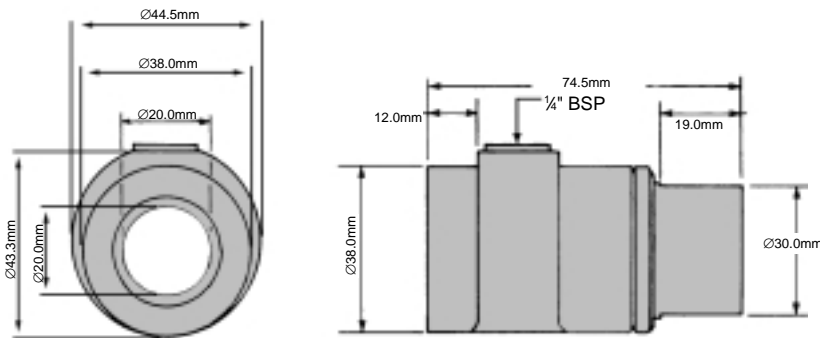


Material: Stainless Steel.
Weight: 0.27Kg
Standard Gap: Adjustable
DBA at: 5.5 bar is 72
Shims: Not Applicable
Standard Inlet Thread: 1/8" BSP
Options: 1/8" NPT
 Please specify on order 1/8" NPTF

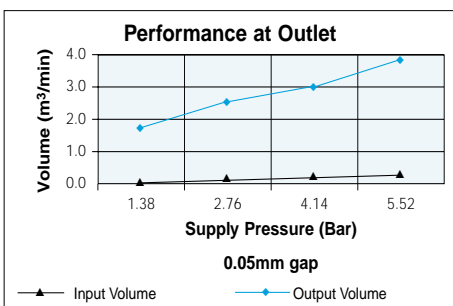


Bar	Vol in m³/min	Vol out m³/min
1.38	0.048	0.490
2.76	0.065	0.660
4.14	0.125	0.733
5.52	0.164	0.886

STAINLESS STEEL ADJUSTABLE AIRMOVER MODEL - SS20A



Material: Stainless Steel.
Weight: 0.39Kg
Standard Gap: Adjustable
DBA at: 5.5 bar is 78
Shims: Not Applicable
Standard Inlet Thread: 1/4" BSP
Options: 1/4" NPT
 Please specify on order 1/4" NPTF



Bar	Vol in m³/min	Vol out m³/min
1.38	0.105	1.614
2.76	0.164	2.492
4.14	0.224	3.030
5.52	0.286	3.681

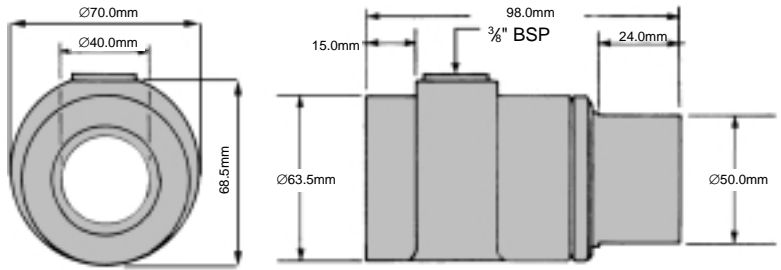
A
I
R
M
O
V
E
R
S

MODEL - SS40A STAINLESS STEEL ADJUSTABLE AIRMOVER

A
I
R

M
O
V
E
R

S



Material: Stainless Steel.

Weight: 0.84Kg

Standard Gap: Adjustable

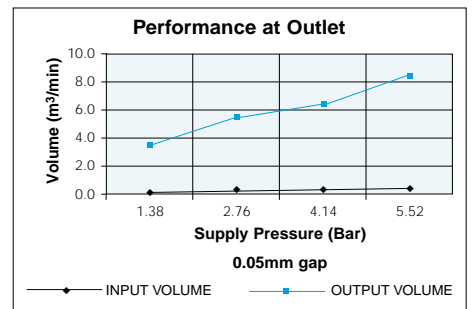
DBA at: 5.5 bar is 80

Shims: Not applicable

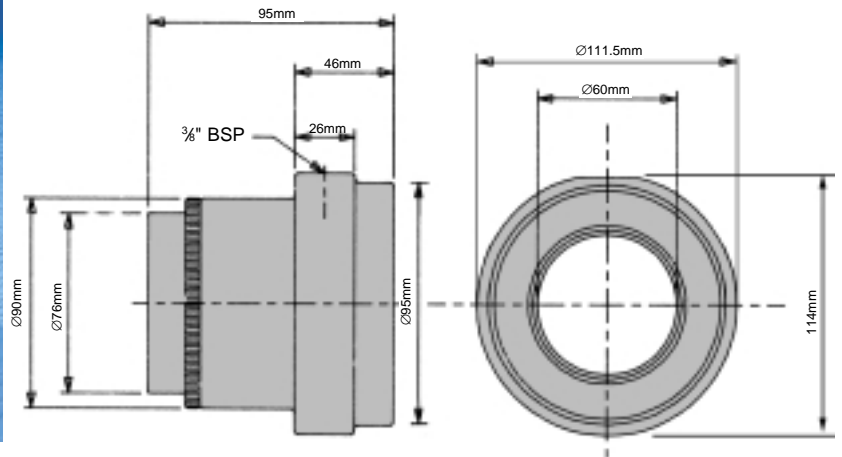
Standard Inlet Thread: #1/8" BSP

Options: #1/8" NPT
Please specify on order #1/8" NPTF

Bar	Vol in m ³ /min	Vol out m ³ /min
1.38	0.207	3.256
2.76	0.323	5.182
4.14	0.439	6.513
5.52	0.555	8.297



MODEL - SS60A STAINLESS STEEL ADJUSTABLE AIRMOVER



Material: Stainless Steel.

Weight: 2.5Kg

Standard Gap: Adjustable

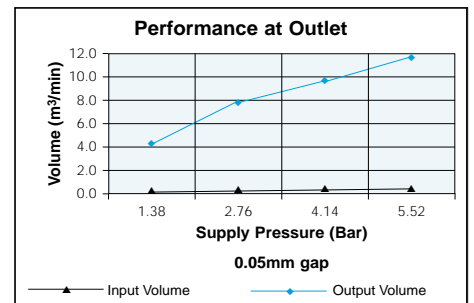
DBA at: 5.5 bar is 80

Shims: Not Applicable

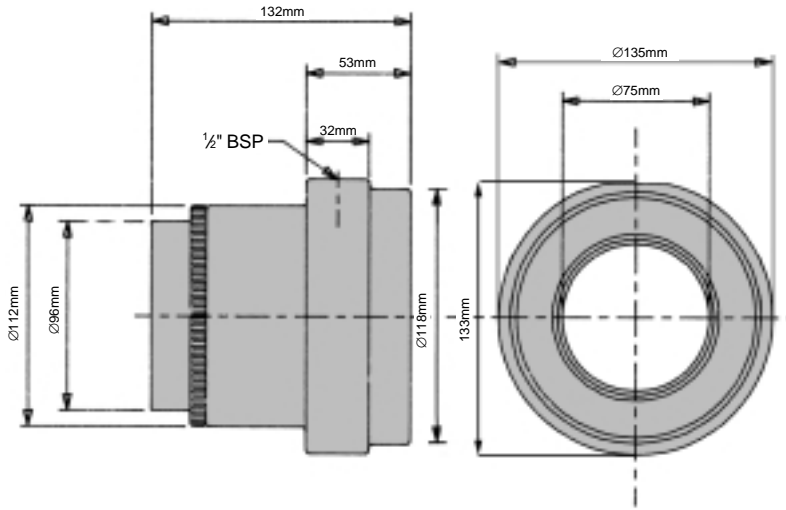
Standard Inlet Thread: #1/8" BSP

Options: #1/8" NPT
Please specify on order #1/8" NPTF

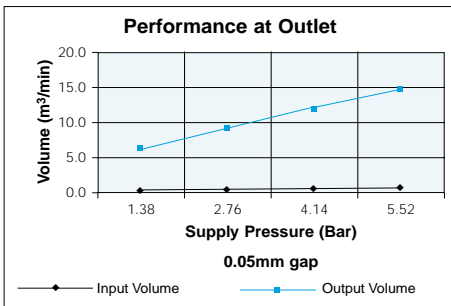
Bar	Vol in m ³ /min	Vol out m ³ /min
1.38	0.280	4.191
2.76	0.476	7.561
4.14	0.654	9.231
5.52	0.841	11.327



STAINLESS STEEL ADJUSTABLE AIRMOVER MODEL - SS75A



Material: Stainless Steel.
Weight: 4.5Kg
Standard Gap: Adjustable
DBA at: 5.5 bar is 81
Shims: Not applicable
Standard Inlet Thread: 1/2" BSP
Options: 1/2" NPT
Please specify on order 1/2" NPTF



Bar	Vol in m³/min	Vol out m³/min
1.38	0.425	6.230
2.76	0.651	9.203
4.14	0.906	12.035
5.52	1.133	14.866

A

/

R

M

O

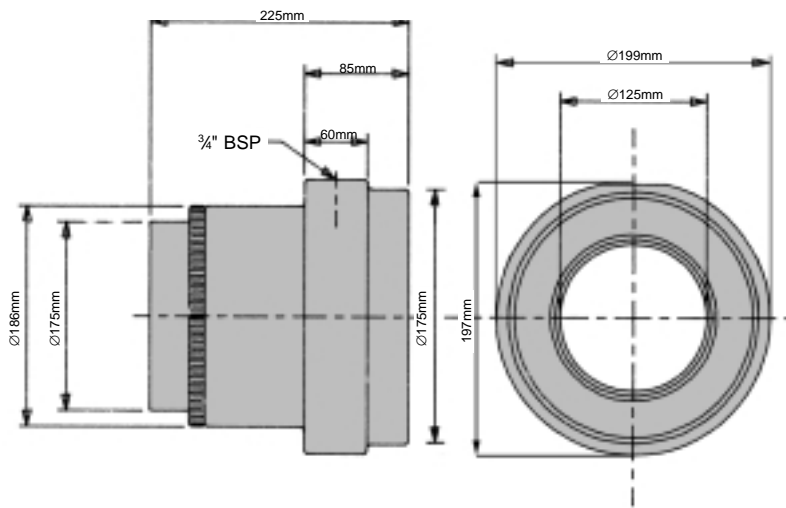
V

E

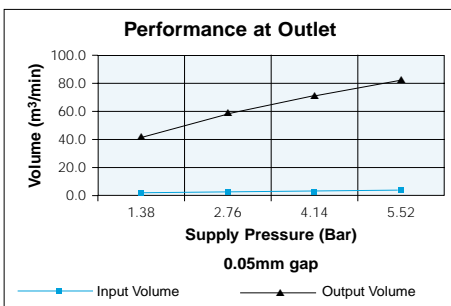
R

S

STAINLESS STEEL ADJUSTABLE AIRMOVER MODEL - SS125A



Material: Stainless Steel.
Weight: 16.3Kg
Standard Gap: Adjustable
DBA at: 5.5 bar is 85
Shims: Not applicable
Standard Inlet Thread: 3/4" BSP
Options: 3/4" NPT
Please specify on order 3/4" NPTF

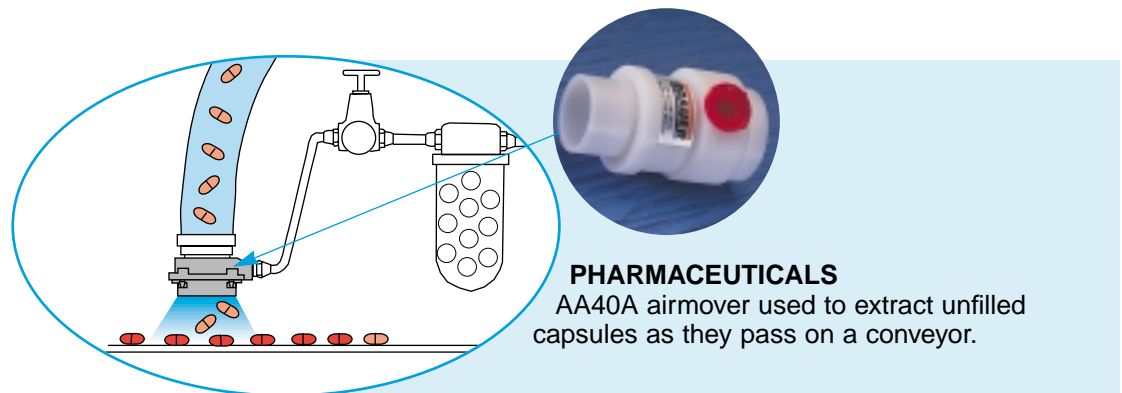
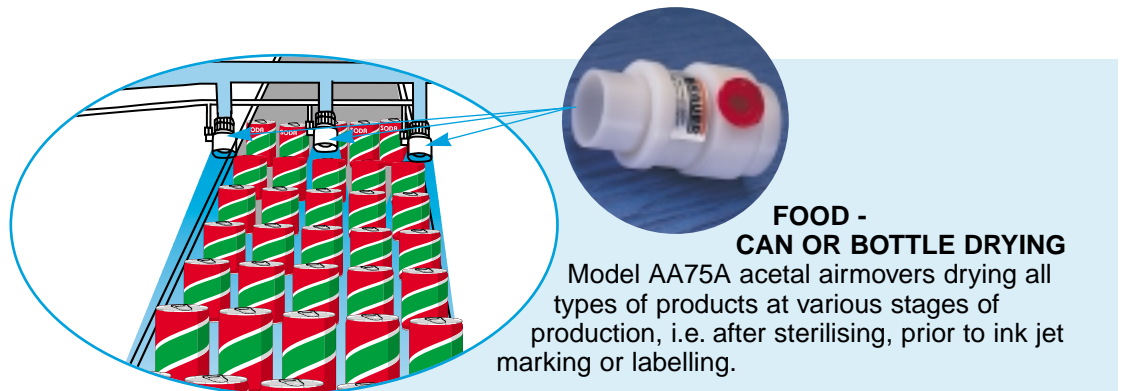


Bar	Vol in m³/min	Vol out m³/min
1.38	1.982	38.936
2.76	3.115	53.660
4.14	4.276	68.668
5.52	5.324	80.137

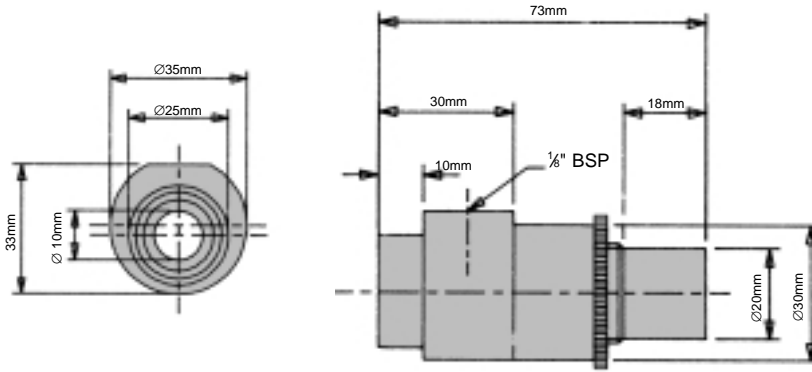
As with our stainless steel range of airmovers, Brauer has developed a unique range of acetal, adjustable airmovers. Again these products are corrosion resistant and impervious to a wide range of chemical attack. Being extremely lightweight, these airmovers may, in certain situations, be more suitable than much heavier stainless steel.

Optional mounting rings and magnetic base are available (see page 19).

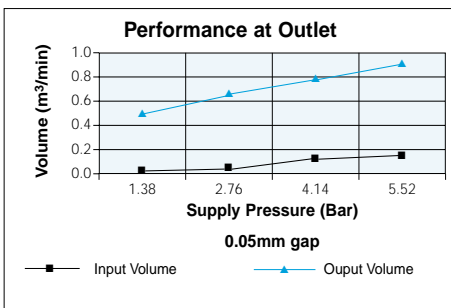
SOME TYPICAL APPLICATIONS - ACETAL ADJUSTABLE AIRMOVERS



ACETAL ADJUSTABLE AIRMOVER MODEL - AA10A

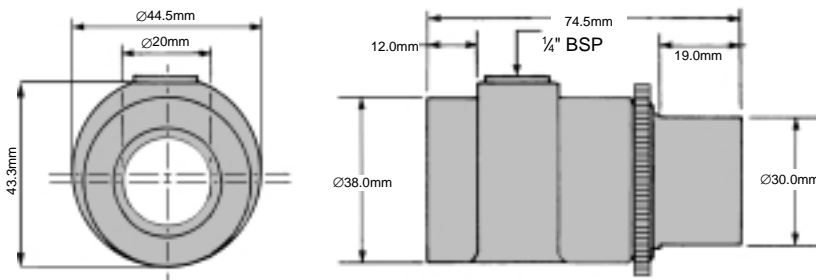


Material: Acetal Copolymer
Weight: 0.05Kg
Standard Gap: Adjustable
DBA at: 5.5 bar is 72
Shims: Not applicable
Standard Inlet Thread: 1/8" BSP
Options: 1/8" NPT
 Please specify on order 1/8" NPTF

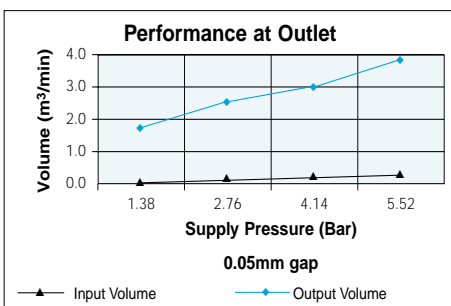


Bar	Vol in m³/min	Vol out m³/min
1.38	0.048	0.490
2.76	0.065	0.660
4.14	0.125	0.733
5.52	0.164	0.886

ACETAL ADJUSTABLE AIRMOVER MODEL - AA20A



Material: Acetal Copolymer
Weight: 0.08Kg
Standard Gap: Adjustable
DBA at: 5.5 bar is 78
Shims: Not applicable
Standard Inlet Thread: 1/4" BSP
Options: 1/4" NPT
 Please specify on order 1/4" NPTF

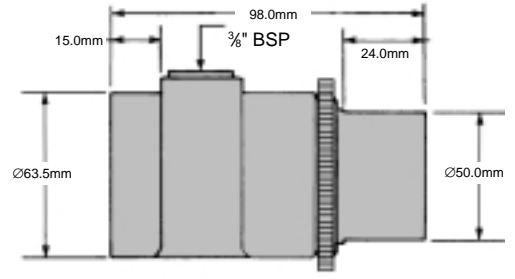
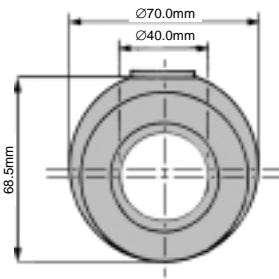


Bar	Vol in m³/min	Vol out m³/min
1.38	0.105	1.614
2.76	0.164	2.492
4.14	0.224	3.030
5.52	0.286	3.681

A
I
R
M
O
V
E
R
S

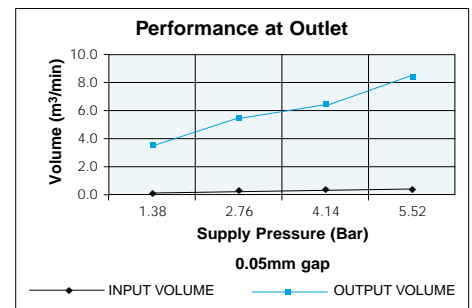
MODEL - AA40A ACETAL ADJUSTABLE AIRMOVER

A
I
R
M
O
V
E
R
S

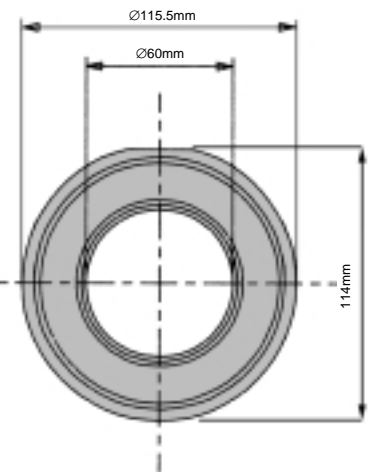
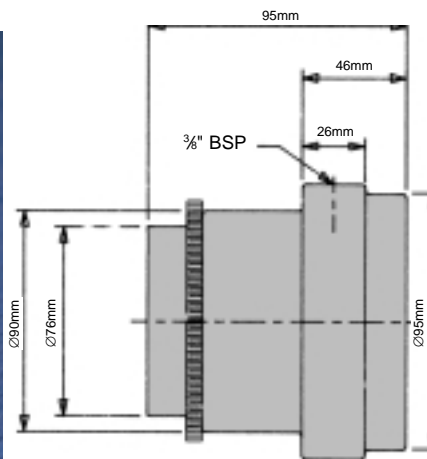


Material: Acetal Copolymer
Weight: 0.20Kg
Standard Gap: Adjustable
DBA at: 5.5 bar is 80
Shims: Not applicable
Standard Inlet Thread: #1/8" BSP
Options: #1/8" NPT
Please specify on order #1/8" NPTF

Bar	Vol in m ³ /min	Vol out m ³ /min
1.38	0.207	3.256
2.76	0.323	5.182
4.14	0.439	6.513
5.52	0.555	8.297

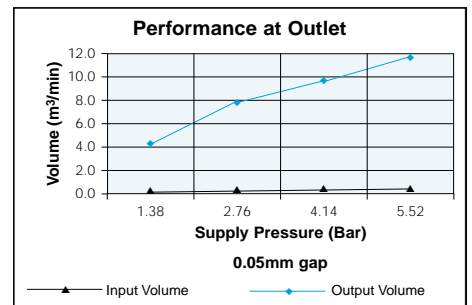


MODEL - AA60A ACETAL ADJUSTABLE AIRMOVER

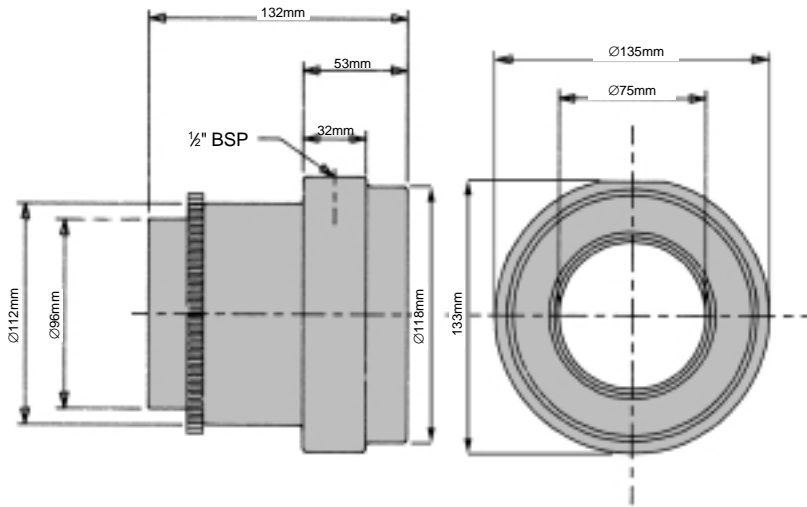


Material: Acetal Copolymer
Weight: 0.73Kg
Standard Gap: Adjustable
DBA at: 5.5 bar is 80
Shims: Not applicable
Standard Inlet Thread: #1/8" BSP
Options: #1/8" NPT
Please specify on order #1/8" NPTF

Bar	Vol in m ³ /min	Vol out m ³ /min
1.38	0.280	4.191
2.76	0.476	7.561
4.14	0.654	9.231
5.52	0.841	11.327



ACETAL ADJUSTABLE AIRMOVER MODEL - AA75A



Material: Acetal Copolymer

Weight: 0.82Kg

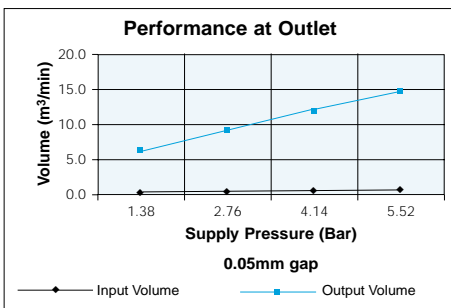
Standard Gap: Adjustable

DBA at: 5.5 bar is 81

Shims: Not applicable

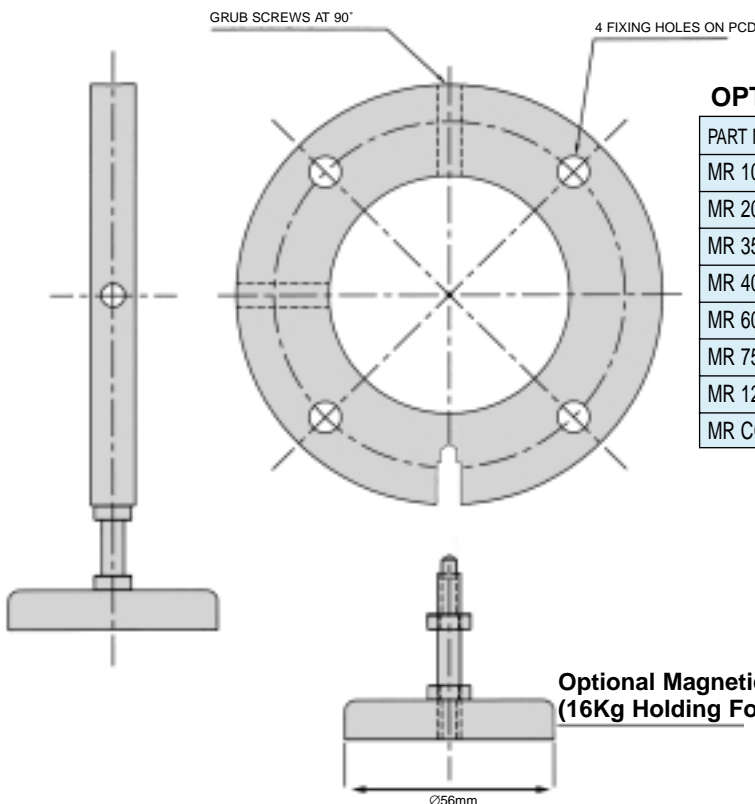
Standard Inlet Thread: 1/2" BSP

Options: 1/2" NPT
Please specify on order 1/2" NPTF



Bar	Vol in m³/min	Vol out m³/min
1.38	0.425	6.230
2.76	0.651	9.203
4.14	0.906	12.035
5.52	1.133	14.866

MOUNTING RINGS FOR ADJUSTABLE AIRMOVERS AND COLD AIR GUNS



OPTIONAL MOUNTING RINGS

PART NUMBER	HOLE SIZE (mm)	HOLE PCD (mm)
MR 10 SS	6.5	54
MR 20 SS	6.5	65
MR 35 SS	8.5	90
MR 40 SS	8.5	94
MR 60 SS	8.5	135
MR 75 SS	8.5	155
MR 125 SS	10.5	225
MR CG4 SS	6.5	65

A
I
R
M
O
V
E
R
S

A

I

R

M

O

V

E

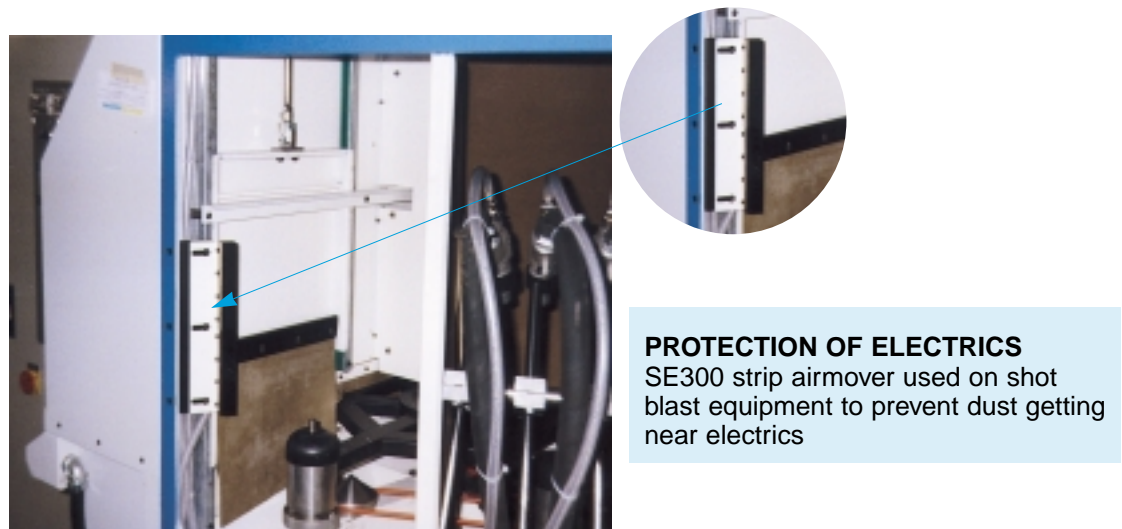
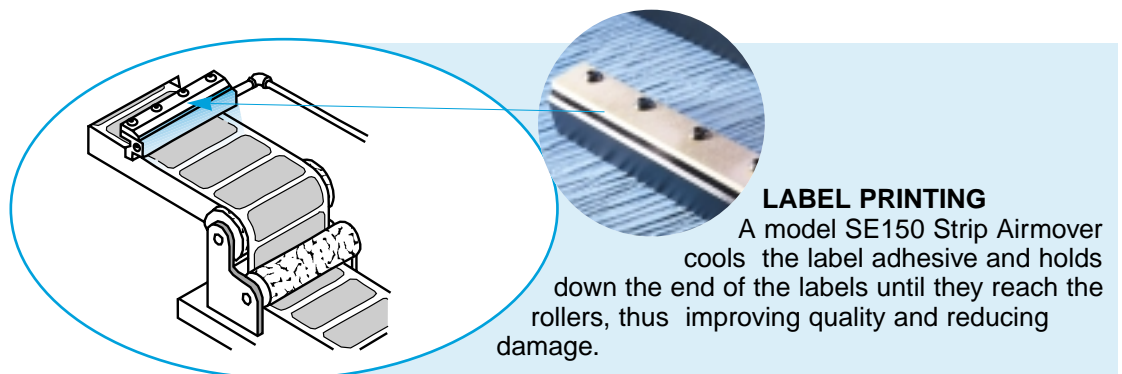
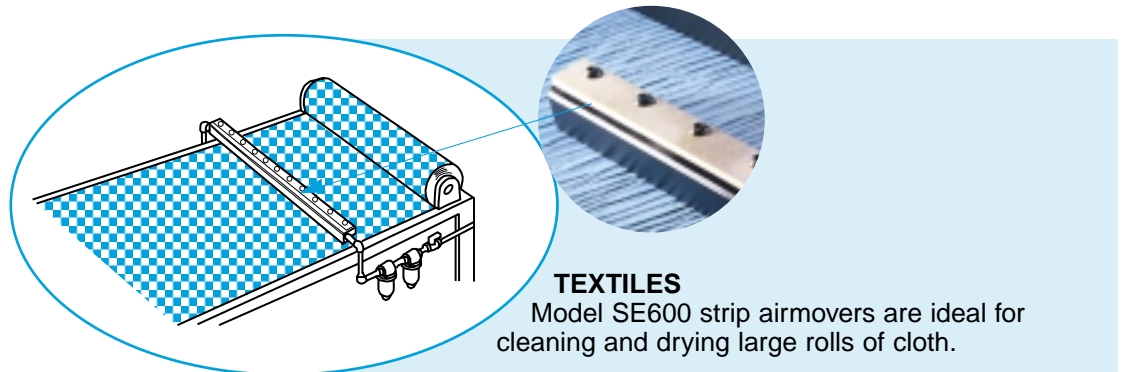
R

S

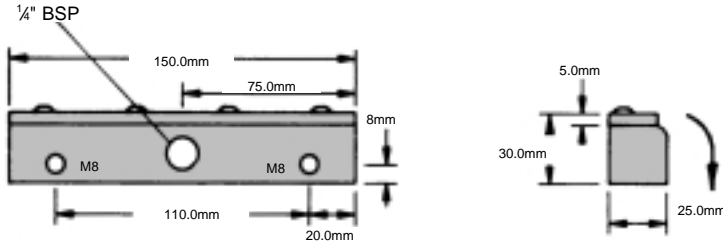
The Brauer strip airmover produces a curtain of air along the length of the application. The strip airmover uses the same Coanda effect utilised in our other air amplifiers. Again there are no moving parts, with compressed air from a local production line source being used to amplify and entrain surrounding air. Output volumes almost twenty times higher than those at the input can be achieved.

Many tooling engineers use drilled or slotted lengths of piping in an attempt to flute air over the required area. But these techniques are highly inefficient in their use of expensive compressed air. Using the built in effectiveness of the strip airmover, significant compressed air savings can be achieved with short investment paybacks. Noise levels will also be reduced.

Our strip airmovers are also offered in stainless steel and can be manufactured in any length from a combination of our standard sizes.

SOME TYPICAL APPLICATIONS - STRIP AIRMOVERS

STRIP AIRMOVER MODEL - SE150



ALSO AVAILABLE IN STAINLESS STEEL TO SPECIAL ORDER

Material: Aluminium/Zinc plated steel

Weight: 0.3Kg

Standard Gap: 0.05-0.10mm

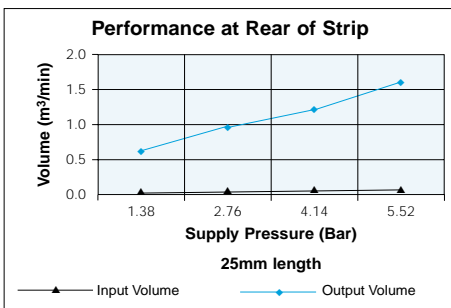
DBA at: 5.5 bar is 80

Shims: Not Applicable

Standard Inlet Threads: 1/4" BSP

Options: 1/4" NPT

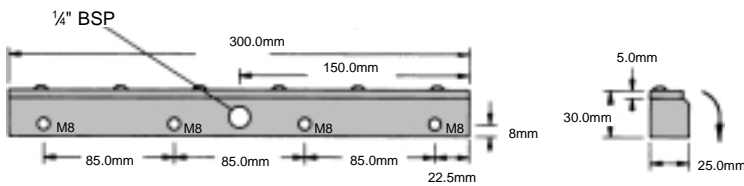
Please specify on order 1/4" NPTF



Bar	Vol in m³/min	Vol out m³/min
1.38	0.034	0.651
2.76	0.054	0.963
4.14	0.074	1.218
5.52	0.093	1.642

per 25mm length

STRIP AIRMOVER MODEL - SE300



ALSO AVAILABLE IN STAINLESS STEEL TO SPECIAL ORDER

Material: Aluminium/Zinc plated steel

Weight: 0.7Kg

Standard Gap: 0.05-0.10mm

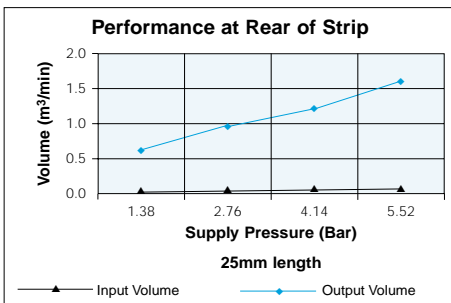
DBA at: 5.5 bar is 80

Shims: Not Applicable

Standard Inlet Threads: 1/4" BSP

Options: 1/4" NPT

Please specify on order 1/4" NPTF



Bar	Vol in m³/min	Vol out m³/min
1.38	0.034	0.651
2.76	0.054	0.963
4.14	0.074	1.218
5.52	0.093	1.642

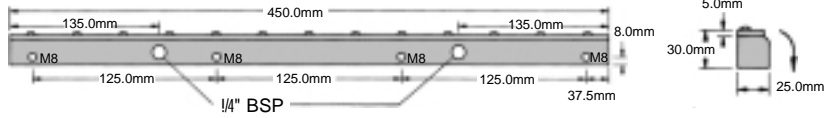
per 25mm length

A
I
R
M
O
V
E
R
S

MODEL - SE450 STRIP AIRMOVER

A
I
R

M
O
V
E
R
S

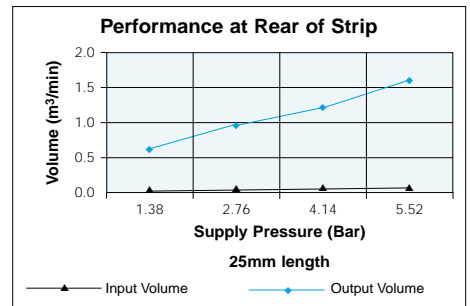


ALSO AVAILABLE IN STAINLESS STEEL
TO SPECIAL ORDER

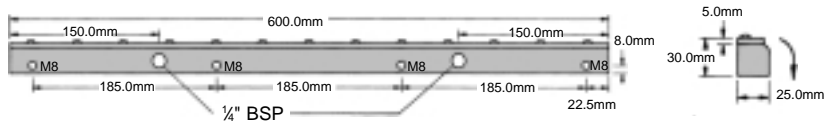
- Material:** Aluminium/Zinc.
- Weight:** 1.0Kg
- Standard Gap:** 0.05-0.10mm
- DBA at:** 5.5 bar is 80
- Shims:** Not Applicable
- Standard Inlet Threads:** 1/4" BSP
- Options:** 1/4" NPT
Please specify on order 1/4" NPTF

Bar	Vol in m ³ /min	Vol out m ³ /min
1.38	0.034	0.651
2.76	0.054	0.963
4.14	0.074	1.218
5.52	0.093	1.642

per 25mm length



MODEL - SE600 STRIP AIRMOVER

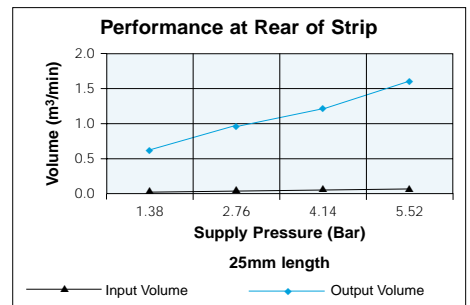


ALSO AVAILABLE IN STAINLESS STEEL
TO SPECIAL ORDER

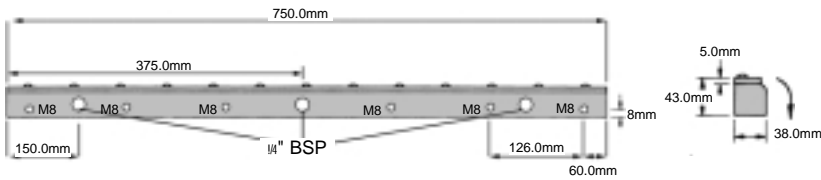
- Material:** Aluminium/Zinc.
- Weight:** 1.35Kg
- Standard Gap:** 0.05-0.10mm
- DBA at:** 5.5 bar is 80
- Shims:** Not Applicable
- Standard Inlet Threads:** 1/4" BSP
- Options:** 1/4" NPT
Please specify on order 1/4" NPTF

Bar	Vol in m ³ /min	Vol out m ³ /min
1.38	0.034	0.651
2.76	0.054	0.963
4.14	0.074	1.218
5.52	0.093	1.642

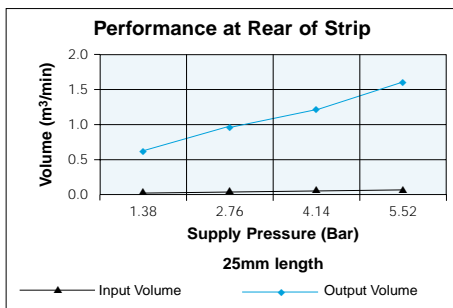
per 25mm length



STRIP AIRMOVER MODEL - SE750



ALSO AVAILABLE IN STAINLESS STEEL
TO SPECIAL ORDER



Bar	Vol in m ³ /min	Vol out m ³ /min
1.38	0.034	0.651
2.76	0.054	0.963
4.14	0.074	1.218
5.52	0.093	1.642

per 25mm length

Material: Aluminium/Zinc.

Weight: 1.7Kg

Standard Gap: 0.05-0.10mm

DBA at: 5.5 bar is 80

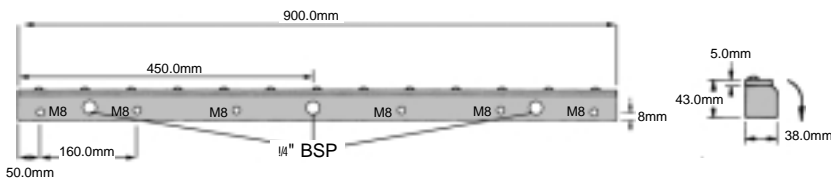
Shims: Not Applicable

Standard Inlet Threads: 1/4" BSP

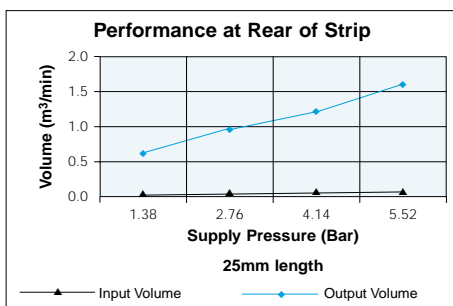
Options: 1/4" NPT

Please specify on order 1/4" NPTF

STRIP AIRMOVER MODEL - SE900



ALSO AVAILABLE IN STAINLESS STEEL
TO SPECIAL ORDER



Bar	Vol in m ³ /min	Vol out m ³ /min
1.38	0.034	0.651
2.76	0.054	0.963
4.14	0.074	1.218
5.52	0.093	1.642

per 25mm length

Material: Aluminium/Zinc.

Weight: 2.0Kg

Standard Gap: 0.05-0.10mm

DBA at: 5.5 bar is 80

Shims: Not Applicable

Standard Inlet Threads: 1/4" BSP

Options: 1/4" NPT

Please specify on order 1/4" NPTF

A
I
R
M
O
V
E
R
S

A

I

R

M

O

V

E

R

S

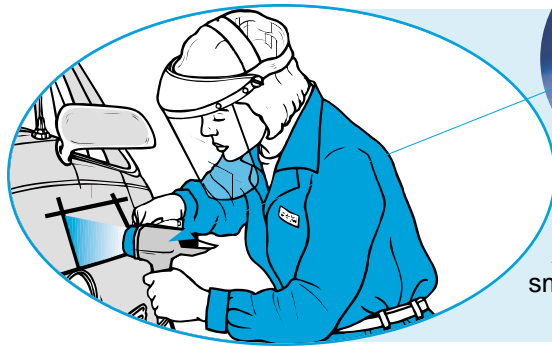
BRAUER offers two series of blow guns, both hand held and operated by trigger. Our aluminium, trigger action blow guns have found favour with a number of major industrial companies, and have been particularly successful in difficult drying operations. The gun is light in weight and easy to use.

Our light weight reversible blow guns are manufactured from nylon, and are each a blow gun, vacuum gun and transfer gun in one compact unit. It is ideal for sucking up spills, waste, metal or plastic chips and is chemical and corrosion resistant. A wide range of accessories is available for this gun including dust collection bags, extension tubes, brushes, conveying hose and a crevice tool.

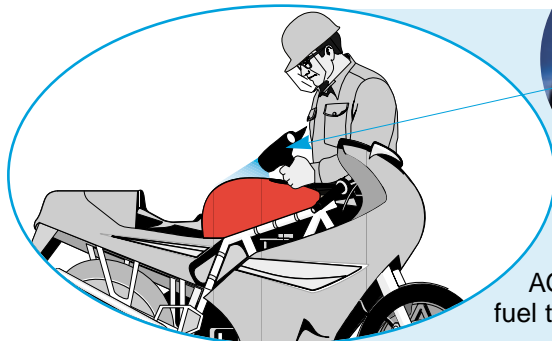
Our lightweight range is further enhanced with a deep hole air gun, ideal for cleaning holes up to 450mm deep.

The deep hole air gun acts both as an air gun and a vacuum gun. A small black tube running from the main body of the unit blasts air to agitate particles while the main gun nozzle sucks them safely away. The benefit of this exceptional system is that it keeps swarf from blowing over into other holes and allows all swarf and debris to be cleared completely from deep drilled or tapped holes. A clear plastic tube gives the user visibility to see when the hole is clear of debris and it also provides protection against any flying particles (see application shot).

SOME TYPICAL APPLICATIONS - TRIGGER ACTION BLOW GUNS



CAR BODY WORK PAINT REPAIRS
AG32 trigger action blow gun is ideal for drying small areas of paint on car body work.

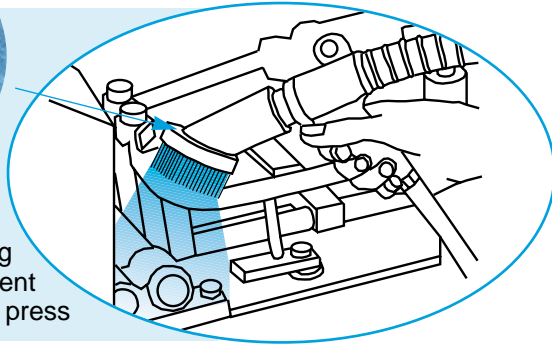


DRYING PAINT
AG32LC trigger action blow gun drying the new fuel tank on a motorbike.



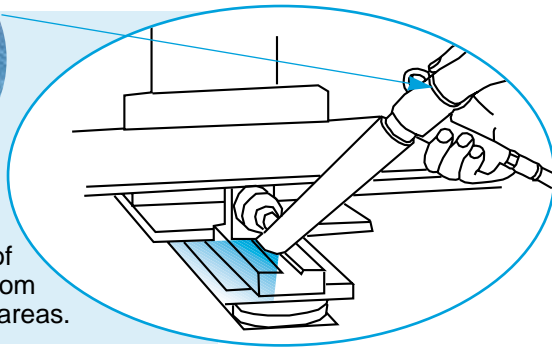
PRINTING

The Reversible Air Gun improves product quality and working environment in printing by efficient clean-up of offset powder on a printing press



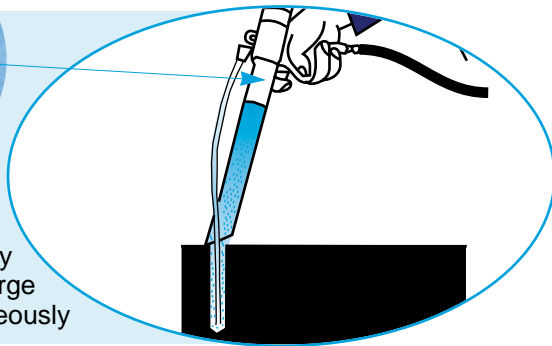
METAL WORKING

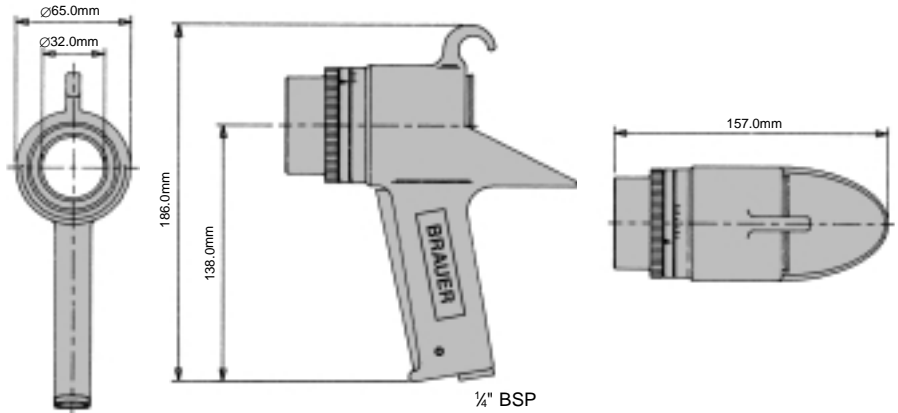
Reversible Air Gun with crevice tool accessory makes easy work of vacuuming swarf and coolant from hard to reach areas.



DEEP HOLE CLEANING GUN

Removing chips from deep holes after drilling is made simple using the specially designed deep hole cleaning gun to purge holes of debris instantaneously





Material: Aluminium Alloy.

Weight: 0.54Kg

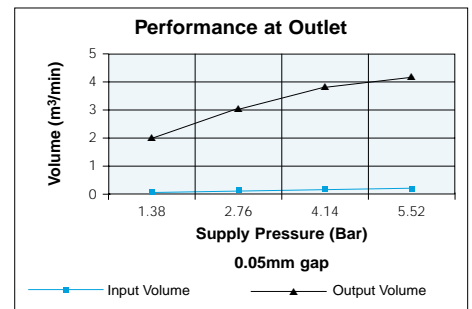
Standard Gap: Adjustable

DBA at: 5.5 bar is 78

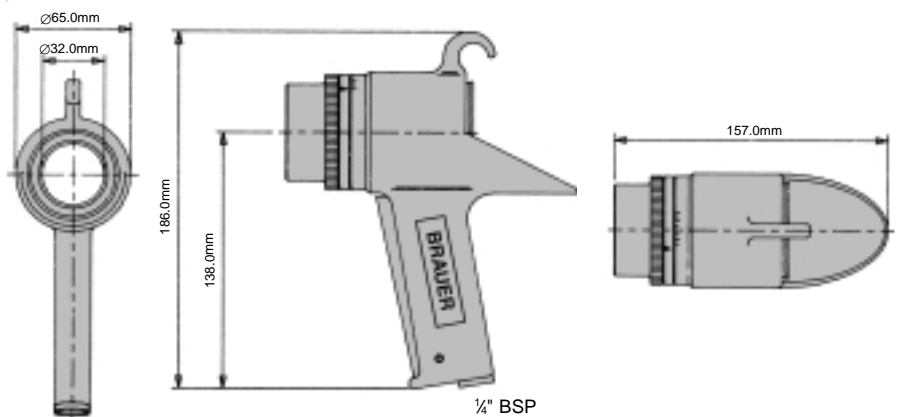
Standard Inlet Thread: 1/4" BSP

Options: 1/4" NPT
Please specify on order 1/4" NPTF

Bar	Vol in m ³ /min	Vol out m ³ /min
1.38	0.122	1.931
2.76	0.218	2.939
4.14	0.311	3.695
5.52	0.405	4.199



MODEL - AG32LC BLOW GUN



Material: Aluminium Alloy.

Weight: 0.54Kg

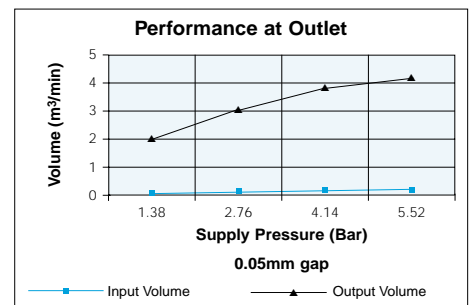
Standard Gap: Adjustable

DBA at: 5.5 bar is 78

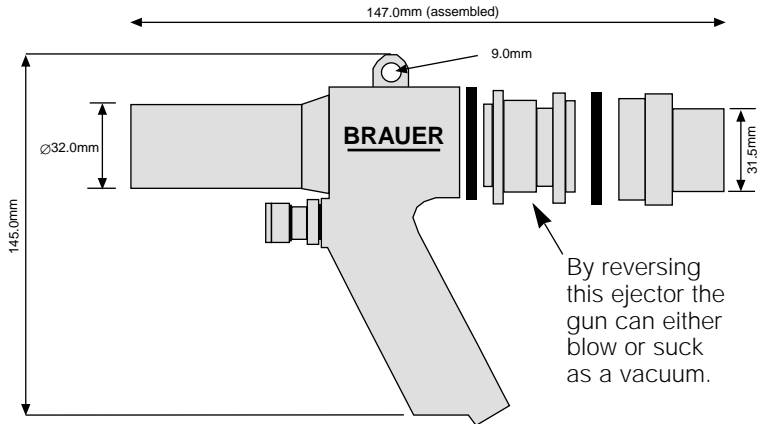
Standard Inlet Thread: 1/4" BSP

Options: 1/4" NPT
Please specify on order 1/4" NPTF

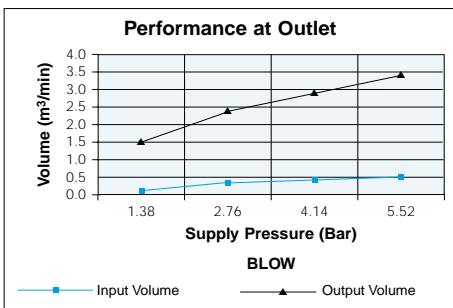
Bar	Vol in m ³ /min	Vol out m ³ /min
1.38	0.122	1.931
2.76	0.218	2.939
4.14	0.311	3.695
5.52	0.405	4.199



TRIGGER ACTION REVERSIBLE BLOW GUN MODEL - CG22

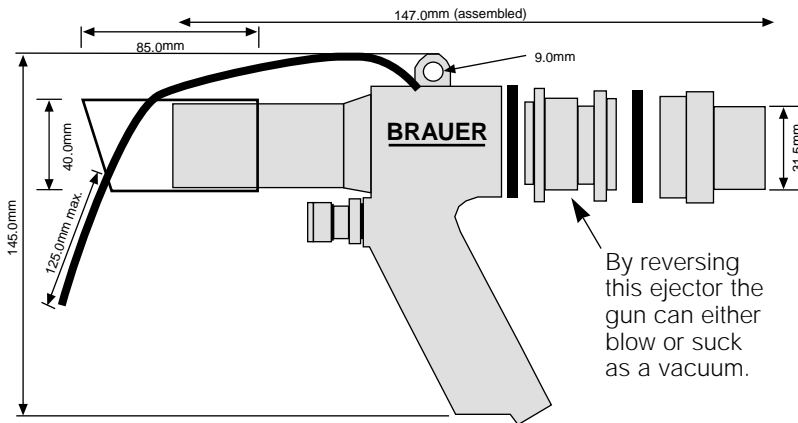


Material: Nylon.
Weight: 0.15Kg
Standard Gap: Adjustable
DBA at: 5.5 bar is 79
Standard Inlet Thread: 1/4" BSP
Option: 1/4" NPT
Please specify on order

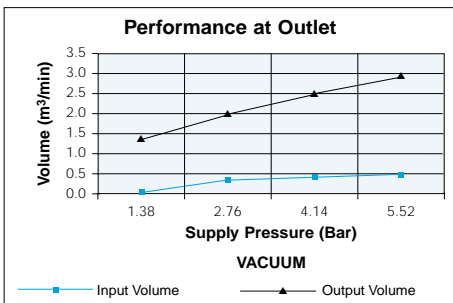


Bar	Vol in m³/min	Vol out m³/min
1.38	0.181	1.512
2.76	0.295	2.352
4.14	0.396	2.856
5.52	0.513	3.360

DEEP HOLE AIR GUN MODEL - CG22DH



Material: Nylon.
Weight: 0.20Kg
Standard Gap: Adjustable
DBA at: 5.5 bar is 79
Standard Inlet Thread: 1/4" BSP
Option: 1/4" NPT
Please specify on order



Bar	Vol in m³/min	Vol out m³/min
1.38	0.185	1.344
2.76	0.304	2.016
4.14	0.421	2.520
5.52	0.531	2.940

A
I
R
M
O
V
E
R
S
I
B
L
E

ACCESSORIES FOR REVERSIBLE BLOW GUN (see previous page)

A wide range of accessories is available including Dust Bags, Extension Tubes, Brushes, Crevice Tool and Delivery Hose.



MODEL NO.	DESCRIPTION
DB22-1	DUST BAG
RB22-6	ROUND BRUSH*
ET22-3	EXTENSION TUBE
CN22-5	CREVICE TOOL*
FN22-2	FLARED NOZZLE*
CH22-4	EXTENSION HOSE

* can be used with both blow gun and drum pump

ACCESSORIES FOR DRUM PUMP (see page 32)

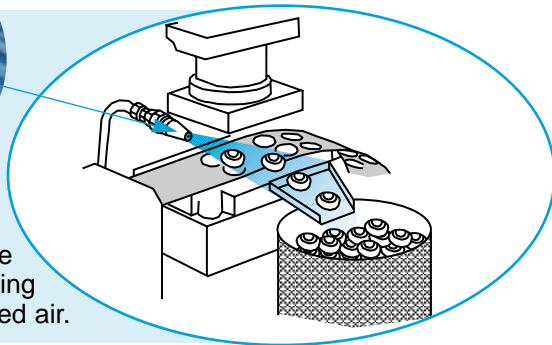
A wide range of accessories is available including Extension Tubes, Brushes, and Crevice Tool.



MODEL NO.	DESCRIPTION
DP175-4	HOSE
DP175-5	EXTENSION TUBE
DP175-2	90° QUICK CONNECTOR

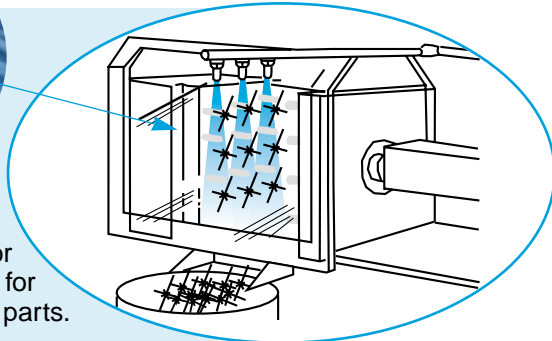
Brauer Airmisers can be fitted either as part of a system or onto any hand held blow gun having a 1/8" B.S.P. female outlet. The airmiser gives a concentrated high velocity jet of air, the compressed airflow being magnified some 25 times or more. However this is achieved with minimal consumption.

SOME TYPICAL APPLICATIONS - AIRMISER NOZZLES



STAMPING

Careful placement of this Airmiser Nozzle ejects parts quickly from this stamping press whilst conserving compressed air.

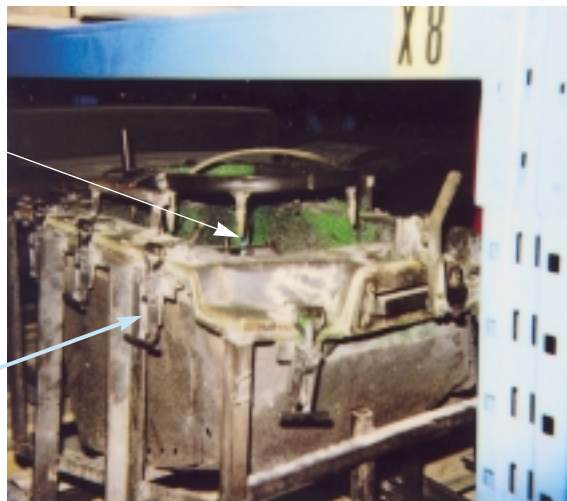


MOULDING

The small size of an Airmiser nozzle with its instant on/off facility makes it ideal for moulding machines. It is used here for cooling and quick release of small parts.

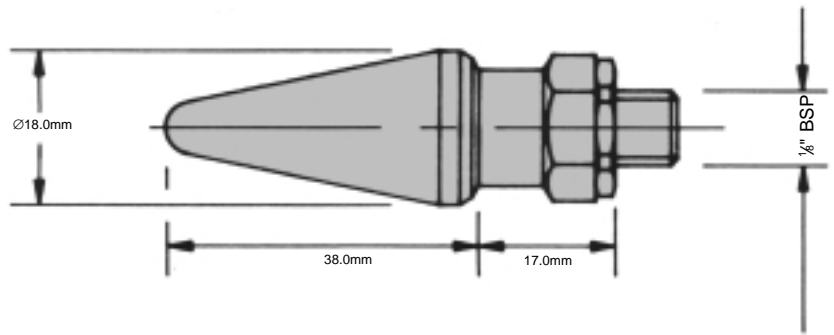


Airmiser nozzle cooling a hot spot in a plastic mould.



FOR BRAUER CLAMPING PRODUCTS PLEASE SEE THE BRAUER CLAMPING PRODUCTS CATALOGUE.

A
I
R
M
O
V
E
R
S



Material: Aluminium Alloy.

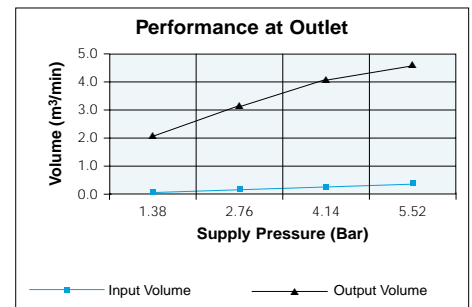
Weight: 0.025Kg

Standard Gap: 0.15mm

DBA at: 5.5 bar is 83

Inlet Thread: 1/8" BSP only

Bar	Vol in m ³ /min	Vol out m ³ /min
1.38	0.125	2.265
2.76	0.212	3.256
4.14	0.300	4.106
5.52	0.391	4.672



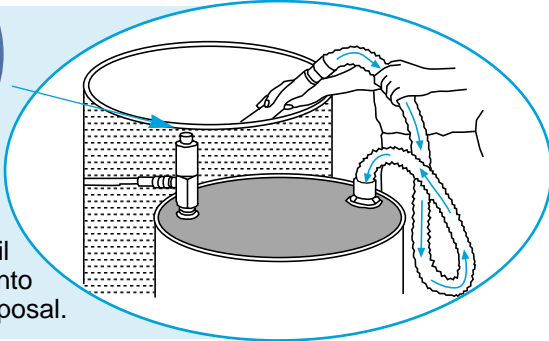
BRAUER has developed a range of tooling aids to assist the workshop engineer – whether he is working with metals, plastics or chemicals.

The Brauer Drum Pump is designed to pick up liquid spills in the workshop. The system utilises the standard 205 litre drum including the two holes which are standard in the drum lid. Tests have shown that the Brauer Drum Pump can transfer 125 litres of machine tool coolant in 65 seconds. The Brauer Drum Pump comes with a number of useful tools which allow the transfer of liquids and solids with ease from difficult areas.

The Brauer air pump system CGP22 is designed to convey a wide range of materials both horizontally and vertically over long distances in a ducted system.

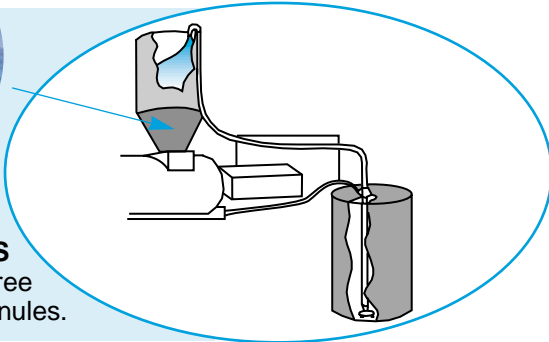
When placed in series the air pump will provide enhanced performance by giving improved conveying power over a much greater distance.

SOME TYPICAL APPLICATIONS - DRUM PUMP



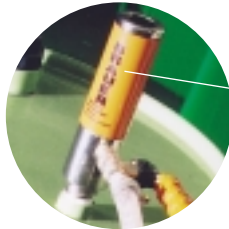
METALWORKING

The Drum Pump kit handles sludge, oil coolant or wet swarf pulling it into drums for clean and easy disposal.



PLASTICS

Air Pump system used for maintenance free conveying of plastic granules.



REMOVING SWARF

Drum pump cleaning up swarf into metal drum for easy disposal.

A
I
R
M
O
V
E
R
S

MODEL - DP175 LIQUID DRUM PUMP



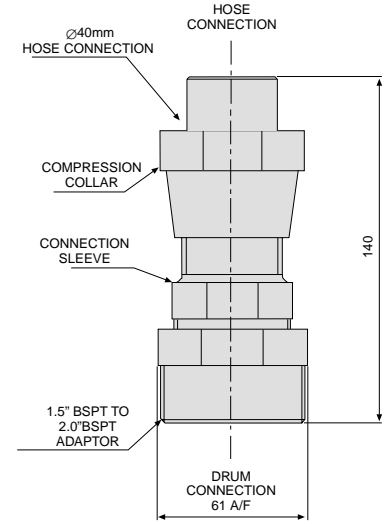
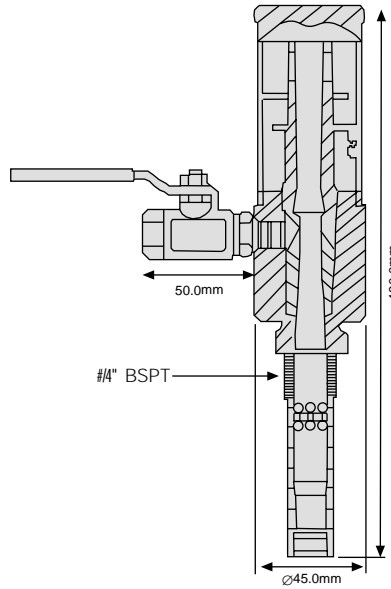
Material: Pump: Stainless Steel
Connector: Nylon

Weight: 1.6Kg

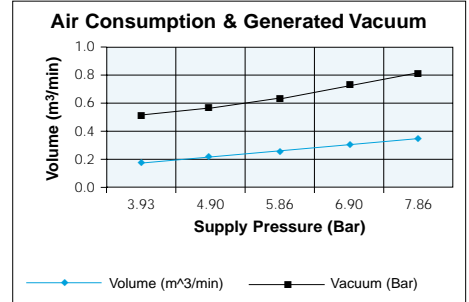
DBA at: 5.5 bar is 92

Standard Inlet Threads: 1/4" BSP

Options: 1/4" NPT
Please specify on order



Bar	Vol in m ³ /min	Vol out m ³ /min
3.93	0.170	0.476
4.90	0.212	0.559
5.86	0.255	0.641
6.90	0.297	0.724
7.86	0.340	0.807



MODEL - CGP22 AIR PUMP SYSTEM



Material: Nylon.

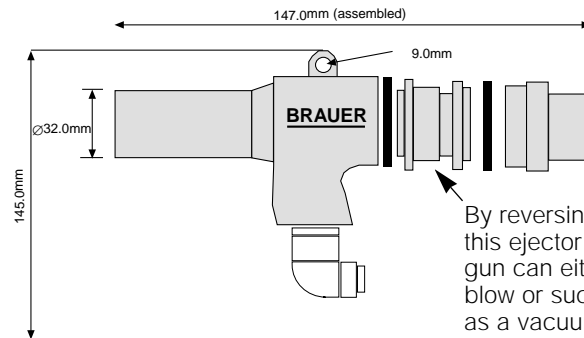
Weight: 0.12kg

Standard Gap: Adjustable

DBA at: 5.5 bar is 79

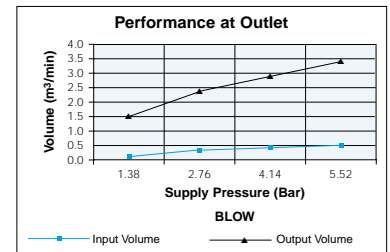
Standard Inlet Threads: 1/4" BSP

Options: 1/4" NPT
Please specify on order

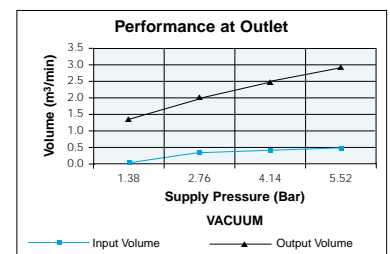


By reversing this ejector the gun can either blow or suck as a vacuum.

Bar	Vol in m ³ /min	Vol out m ³ /min
1.38	0.181	1.512
2.76	0.295	2.352
4.14	0.396	2.856
5.52	0.513	3.360



Bar	Vol in m ³ /min	Vol out m ³ /min
1.38	0.185	1.344
2.76	0.304	2.016
4.14	0.421	2.520
5.52	0.531	2.940



A
I
R
M
O
V
E
R
S

A Vortex Tube turns ordinary compressed air into two streams of air, one is very cold and one hot.

The Brauer Vortex Tube is manufactured from stainless steel giving excellent resistance to oxidation and corrosion and particularly high wear resistance. No tools are needed to adjust the temperature; this is achieved by use of a control knob at the end of the unit.

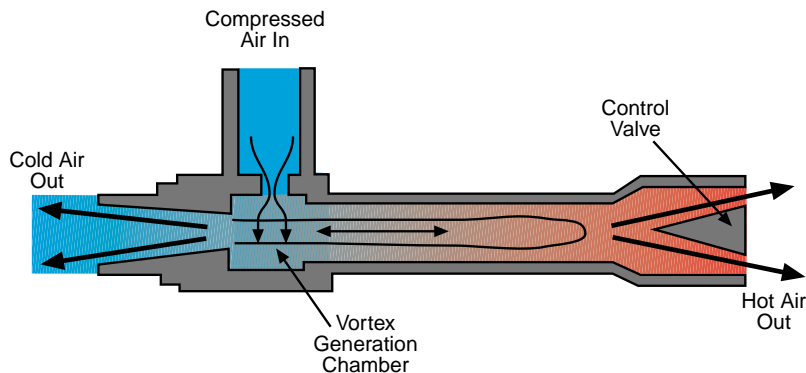
Brauer Vortex Tubes can produce:

- temperatures from 38°C below input temperature to 39°C above input temperature
- airflow rates up to 30 CFM (860 LPM)
- refrigeration up to 1430 Btu/H (360 Kcal/H)

Applications include the cooling of electronic enclosures.

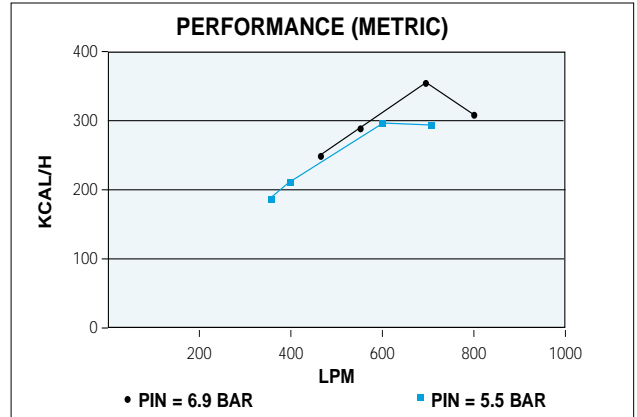
VORTEX TUBES AND HOW THEY WORK

A compressed air supply at up to 6.9 bar is used to create 2 low pressure air flows when passed through the vortex generator. The generator spins the air and separates it into cold air and hot air. The cold air exits at typically 38°C below the air supply temperature, whilst hot air at 39°C above the air supply temperature exits at the rear of the vortex chamber.

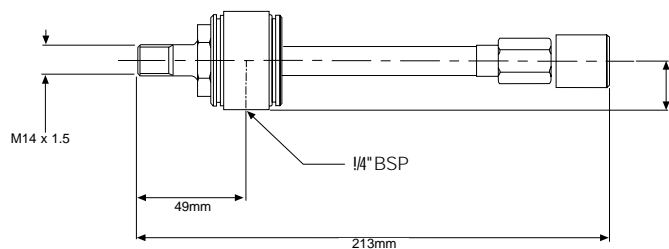


The Vortex Tube Performance Charts below give approximate temperature drops (and rises) from inlet air temperature produced by a vortex tube set at each cold fraction. Assuming no fluctuation of inlet temperature or pressure, a vortex tube will reliably maintain temperature within $\pm 1^{\circ}\text{C}$.

Unit / Generator	Supply Pressure BAR	Air Consumption LPM	Thermal Capacity KCAL/H	Temp Red's $^{\circ}\text{C}$
#2	6.9	439	255	38
#4	6.9	499	283	34
#6	6.9	678	360	25
#8	6.9	857	318	16.4
#2	5.5	336	180	36
#4	5.5	392	217	33
#6	5.5	555	298	25
#8	5.5	698	285	16



MODEL - CG4AX VORTEX TUBES



Material: Stainless Steel.

Weight: 1.5Kg

DBA at: 5.5 bar is 80

Standard Inlet Threads: 1/4" BSP

Options: 1/4" NPT

Please specify on order 1/4" NPTF

A
I
R
M
O
V
E
R
S

It seems amazing that your workshop compressed air can be used to provide two very different air streams when passed through the Brauer Cold Air Gun or Vortex Tube

- one air stream at 38°C below the workshop supply temperature
 - the other at 39°C above the workshop supply temperature
- all by using a Brauer Cold Air Gun

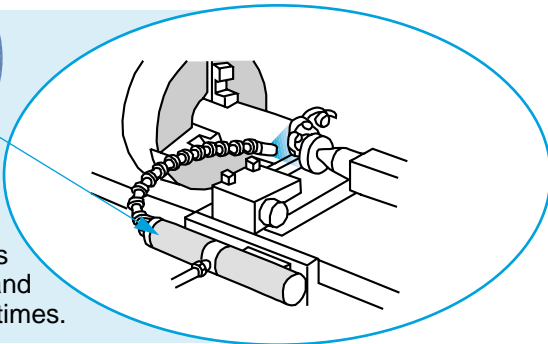
The uses for such a phenomenon are widespread:

- cool machining operations, removing the need for wet coolant
- cool electronic control cabinets
- setting hot formed plastics, sealants or solders

All are achieved with no electric power requirement and using a virtually maintenance free, stainless steel constructed Vortex Tube.

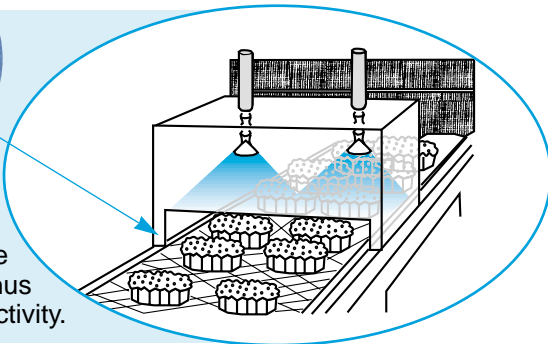
The Brauer adjustable cold air gun has incorporated a temperature control knob allowing you to set the optimum efficiency required for your application.

SOME TYPICAL APPLICATIONS - COLD AIR GUN



PLASTICS AND MACHINING

A Cold Air Gun improves the finish on this plastic by cooling the cutting tool thus increasing the life of the cutting tool and therefore speeding up cycle times.



FOOD PROCESSING - PRODUCT COOLING

Two Cold Air Guns provide clean, cold dry air to cool bakery items eliminating expensive and long cooling conveyors, and thus improving productivity.

A
I
R
M
O
V
E
R
S

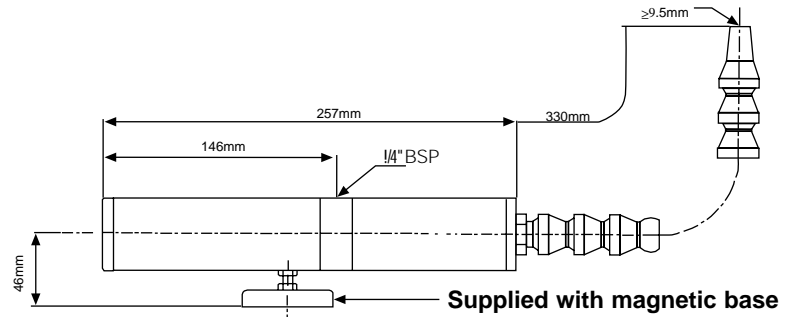
A

I

R



Material: Stainless Steel
Weight: 1.7Kg
DBA at: 5.5 bar is 80
Standard Inlet Threads: 1/4" BSP
Options: 1/4" NPT
 Please specify on order 1/4" NPTF



M

O

V

E

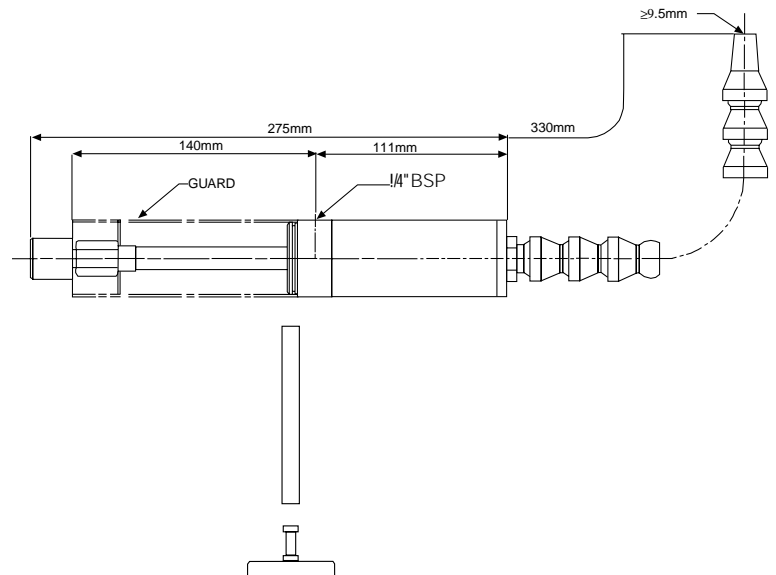
R

S

MODEL - CG4A ADJUSTABLE COLD AIR GUN



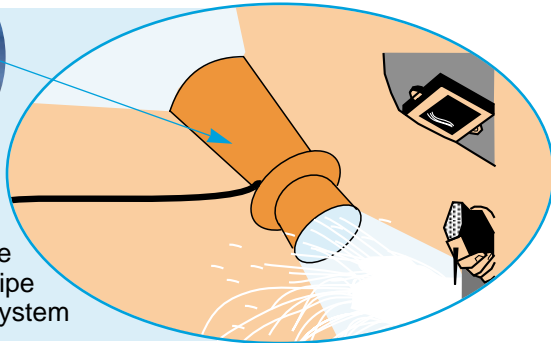
Material: Stainless Steel.
Weight: 1.7Kg
DBA at: 5.5 bar is 80
Standard Inlet Threads: 1/4" BSP
Options: 1/4" NPT
 Please specify on order 1/4" NPTF



Optional mounting rings and magnetic base are available (see page 19).

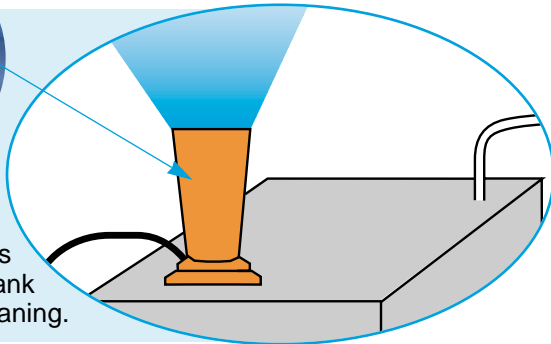
In some applications it is important to vent large volumes of air or fumes as quickly as possible – for example in venting the cargo holds of ships. Brauer offers a range of lightweight, GRP construction ventilators which remove dust and fumes quickly and safely, and are resistant to chemicals, salt water and general corrosion. A range of anti-static extractor/ventilators is also available

SOME TYPICAL APPLICATIONS - EXTRACTOR VENTILATORS



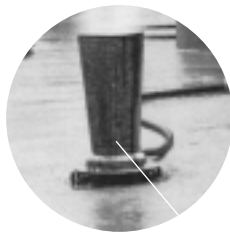
FUME EXTRACTION

An EV4 extractor ventilator removing fumes directly from the face of the welder. The fumes can be led away by a flexible pipe to the outside or to a ventilation system



FUME EXTRACTION

An EV6 extractor removing hot gases from chemical storage tank prior to tank venting, inspection and cleaning.



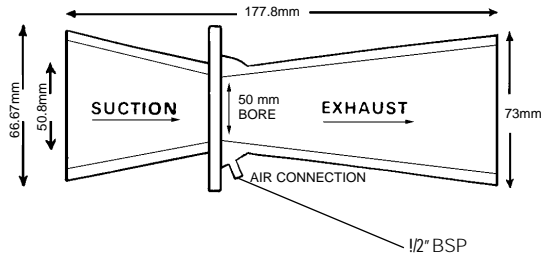
An EV8 extractor ventilator used to vent the cargo hold of a ship prior to cleaning.

A
/
R
M
O
V
E
R
S

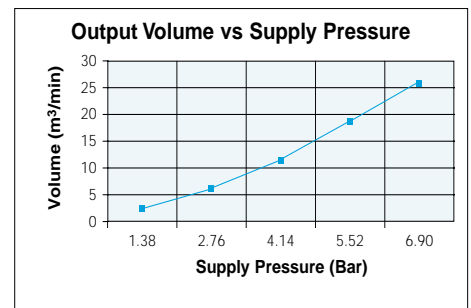
A
I
R
M
O
V
E
R
S



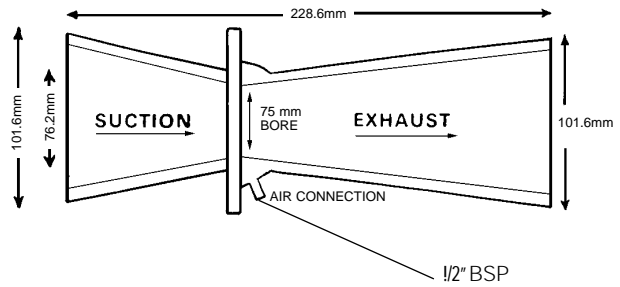
Material: GRP
Weight: 0.43Kg
DBA at: 5.5 bar is 90
Takes 2 1/2" bore ducting
Standard Inlet Threads: 1/2" BSP
Option: 1/2" NPT
Please specify on order



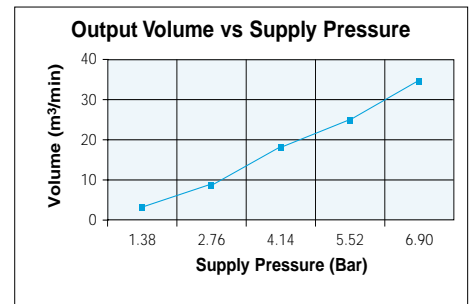
Bar	Vol out m ³ /min
1.38	2.832
2.76	6.796
4.14	11.893
5.52	18.406
6.90	26.051



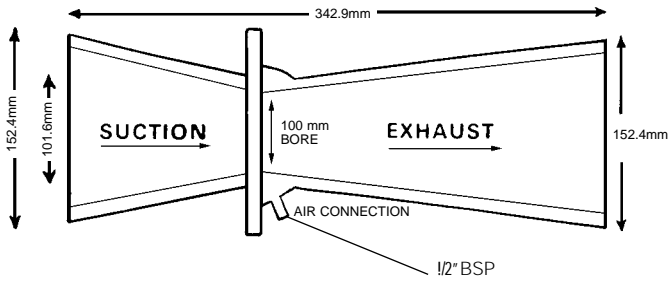
Material: GRP.
Weight: 0.71Kg
DBA at: 5.5 bar is 88
Takes 4" bore ducting
Standard Inlet Threads: 1/2" BSP
Option: 1/2" NPT
Please specify on order



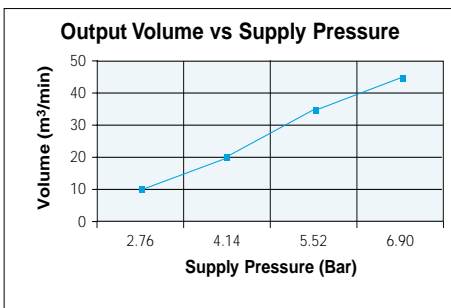
Bar	Vol out m ³ /min
1.38	3.681
2.76	8.495
4.14	16.707
5.52	25.485
6.90	33.980



EXTRACTOR VENTILATOR MODEL - EV4

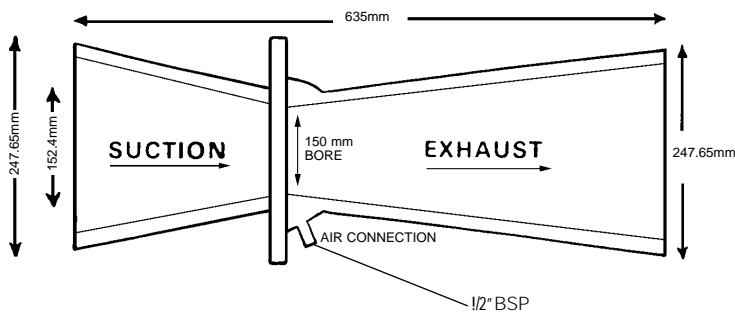


Material: GRP.
Weight: 1.5Kg
DBA at: 5.5 bar is 85
Takes 6" bore ducting
Standard Inlet Threads: 1/2" BSP
Option: 1/2" NPT
Please specify on order

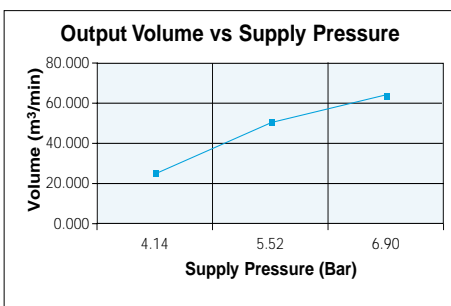


Bar	Vol out m³/min
2.76	10.194
4.14	20.388
5.52	35.396
6.90	45.307

EXTRACTOR VENTILATOR MODEL - EV6



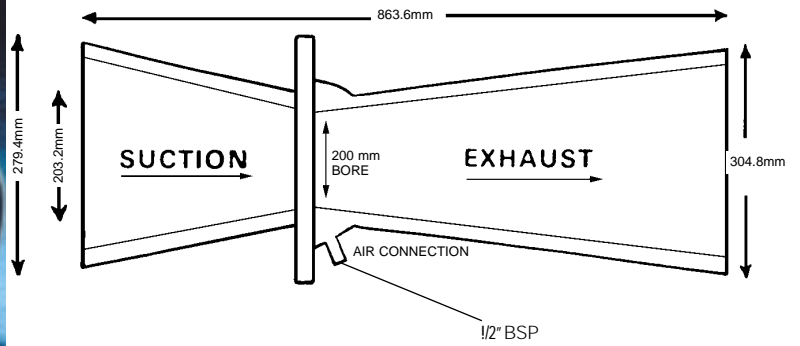
Material: GRP.
Weight: 4.5Kg
DBA at: 5.5 bar is 78
Takes 10" ducting
Standard Inlet Threads: 1/2" BSP
Option: 1/2" NPT
Please specify on order



Bar	Vol out m³/min
4.14	27.751
5.52	50.970
6.90	65.129

A
I
R
M
O
V
E
R
S

A
I
R
M
O
V
E
R
S



Material: GRP.

Weight: 7Kg

DBA at: 5.5 bar is 75

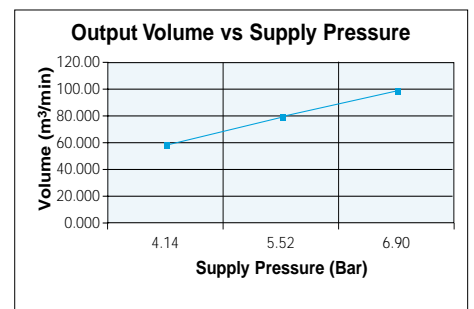
Takes 12" ducting

Standard Inlet Threads: 1/2" BSP

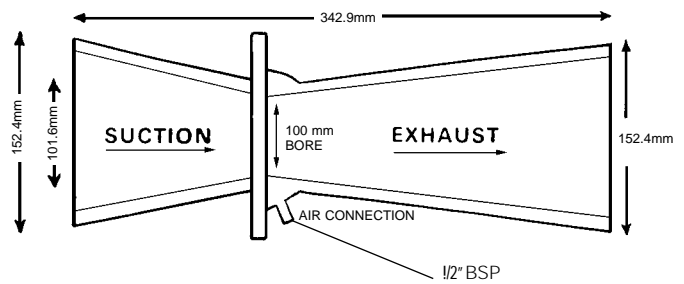
Option: 1/2" NPT

Please specify on order

Bar	Vol out m ³ /min
4.14	56.634
5.52	76.455
6.90	96.277



MODEL - AEV4 ANTI-STATIC EXTRACTOR VENTILATOR



Material: GRP.

Weight: 1.75Kg

DBA at: 5.5 bar is 85

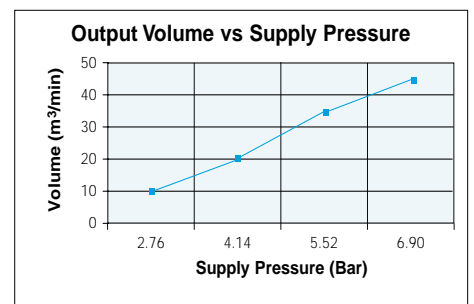
Takes 6" ducting

Standard Inlet Threads: 1/2" BSP

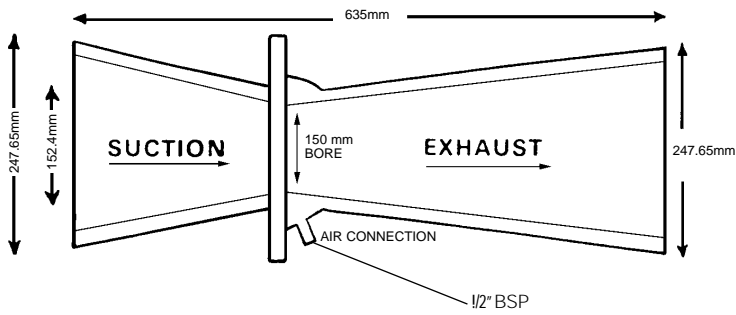
Option: 1/2" NPT

Please specify on order

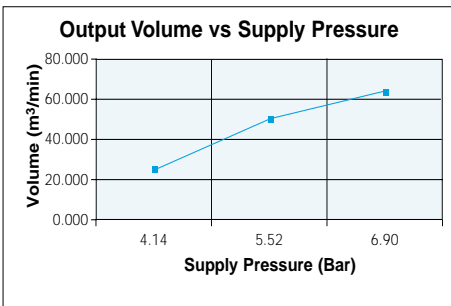
Bar	Vol out m ³ /min
2.76	10.194
4.14	20.388
5.52	35.396
6.90	45.307



ANTI-STATIC EXTRACTOR VENTILATOR MODEL - AEV6

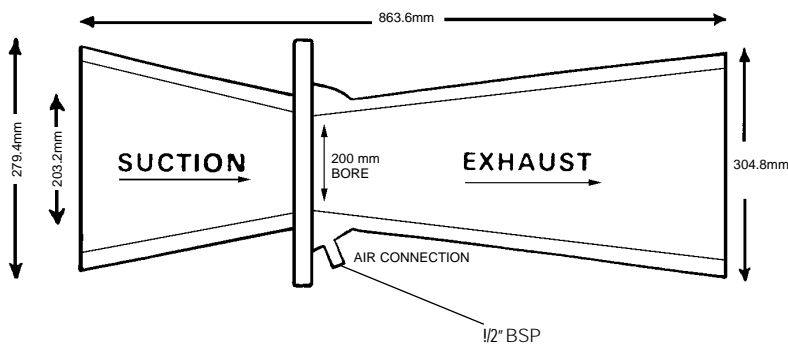


Material: GRP.
Weight: 5Kg
DBA at: 5.5 bar is 78
Takes 10" ducting
Standard Inlet Threads: 1/2" BSP
Option: 1/2" NPT
Please specify on order

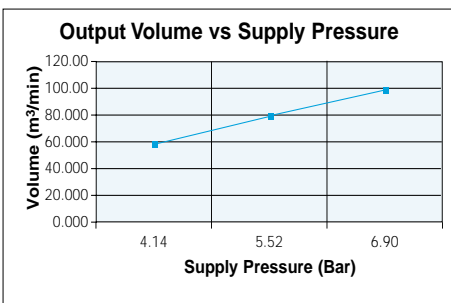


Bar	Vol out m³/min
4.14	27.751
5.52	50.970
6.90	65.129

ANTI-STATIC EXTRACTOR VENTILATOR MODEL - AEV8



Material: GRP.
Weight: 7.5Kg
DBA at: 5.5 bar is 75
Takes 12" ducting
Standard Inlet Threads: 1/2" BSP
Option: 1/2" NPT
Please specify on order



Bar	Vol out m³/min
4.14	56.634
5.52	76.455
6.90	96.277

A
I
R
M
O
V
E
R
S

OTHER **BRAUER** PRODUCTS

BRAUER
CLAMPING PRODUCTS



BRAUER
PNEUMATIC WORKHOLDING



BRAUER
POWER CLAMPING



BRAUER
INDUSTRIAL PRESSES



HMC
WHEELS & CASTORS



ROTOLIN
LINEAR/ROTARY BEARINGS



EXACTA
DOWEL PINS



EXACTA
DIE SETS & PRESS TOOL ACCESSORIES



For further details contact

BRAUER

DAWSON ROAD, MOUNT FARM,
MILTON KEYNES, ENGLAND MK1 1JP
TEL: 00 44(0)1908-374022 FAX: 00 44(0)1908 641628
email: sales@brauer.co.uk web: www.brauer.co.uk

Authorised Dealer stamp

