

No part may be reproduced in any form without permission in writing from the publisher

A1H221E00AT05P

The right to introduce technical modifications is reserved

### Characteristics according to VDI 3267

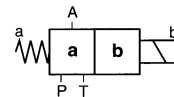
General Features			
Type			Poppet valve
Mounting			Cartridge-type
Port size			See dimensions
Weight (mass)		kg	0.7
Installation			In any position
Flow direction			See switching symbols
Max. permissible switching frequency		1/h	3000
Ambient temperature range	$\vartheta_{u \min}$ $\vartheta_{u \max}$	°C °C	-30 +50
Suited for special operating conditions			Operation with flame resistant media on request
Surfaces			Protected according to DIN 50961 and DIN 50941
Hydraulic Characteristics			
Operating pressure	$p_{\max}$	bar	P, A = 350; T = 160 (max. 80% of P)
Flow rate	Q	l/min	1 - 10
Pressure medium			Mineral oil according to DIN 51524 and DIN 51525
Filter		$\mu\text{m}$	25 absolute
Pressure media temperature range	$\vartheta_{m \min}$ $\vartheta_{m \max}$	°C °C	-30 +70
Viscosity range	$v_{\min}$ $v_{\max}$	mm <sup>2</sup> /s mm <sup>2</sup> /s	2.5 380
Actuation			
Electromagnetic			With/without manual emergency override
Nominal voltage	$U_N$	V	See order instructions
Voltage			DC ± 10% AC ± 10% with rectifier socket
Power consumption	$P_{20}$	W	30; $P_{20}$ = performance at 20 °C
Duty cycle	ED		Continuous operation
Electrical protection			According to DIN 40050, IP65 with plug
Connection			Connector DIN 43650-AF2-PG9

For spare parts see Spare Parts List. When ordering, please state the complete type designation. For series designations see type plate.

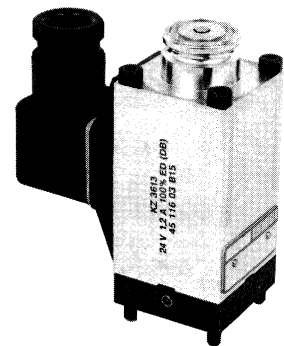
## 3/2-way-Poppet Valve 10 l/min

Cartridge-type  
Direct solenoid actuation

MSV 32- BE06 --



Leakage-free version.  
Direct power transmission.  
Hydraulically balanced.  
Great switching reliability even after long operating periods under high pressure.  
Fully enclosed, tropicalized design.  
Various manual emergency overrides.

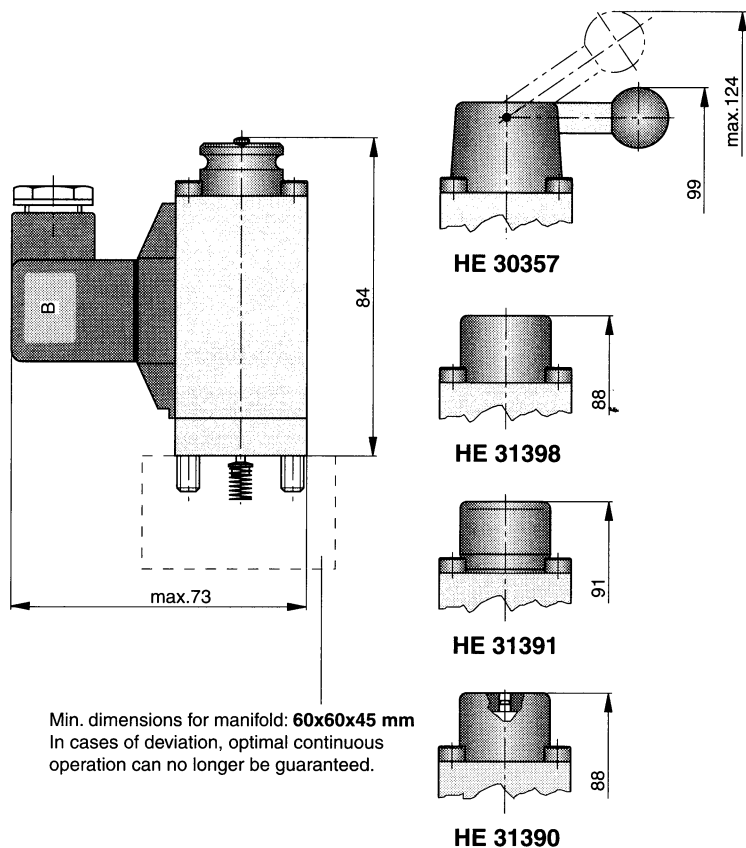


**HOERBIGER HYDRAULIK**

January 1993

A1H221E

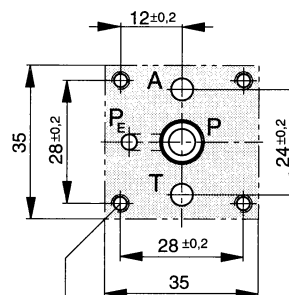
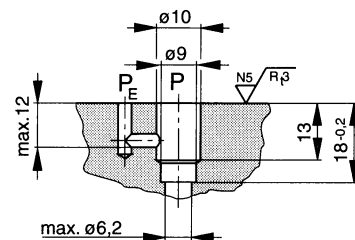
### Dimensions (mm)



Min. dimensions for manifold: **60x60x45 mm**  
 In cases of deviation, optimal continuous operation can no longer be guaranteed.

Connector can be mounted in 4 positions at a 90° angle.

### Installation Space (mm)



Min. mounting surface

Attention! PE connected with P,  
 min.  $\varnothing 3$   
 4 threads M4 x min. 10  
 A, PE, T: max.  $\varnothing 4,8$

### Order Instructions

MSV 321 BE06 P -----

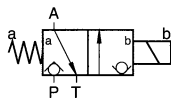
### Ordering Example

#### Manual Emergency Override

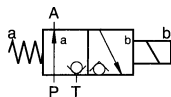
-----	Basic version
HE30357	Lever
HE31398	Closed
HE31391	Pushbutton
HE31390	Manual override pin

#### Switching Symbols

321



322



#### Electrical Data

N	12 V=
P	24 V=
G	98 V=
S	196 V=
V	110 V 50/60 Hz
W	220 V 50/60 Hz

further voltages on request